

4G LTE

4G LTE Antenna

UMB-PAN-17SF



Frequency :698~2690MHZ

Gain : 7.5dBi

Connector : SMA-Female (Optional)

V.S.W.R : <1.5:1

Impedance : 50 ohm

Cable : CFD195 (Optional)

Weight: 1800g

Material : ABS & Aluzinc

Polarization: Vertical

Color: White Grey

Mount: Wall Mount

Temperature: -40°C to +80°C

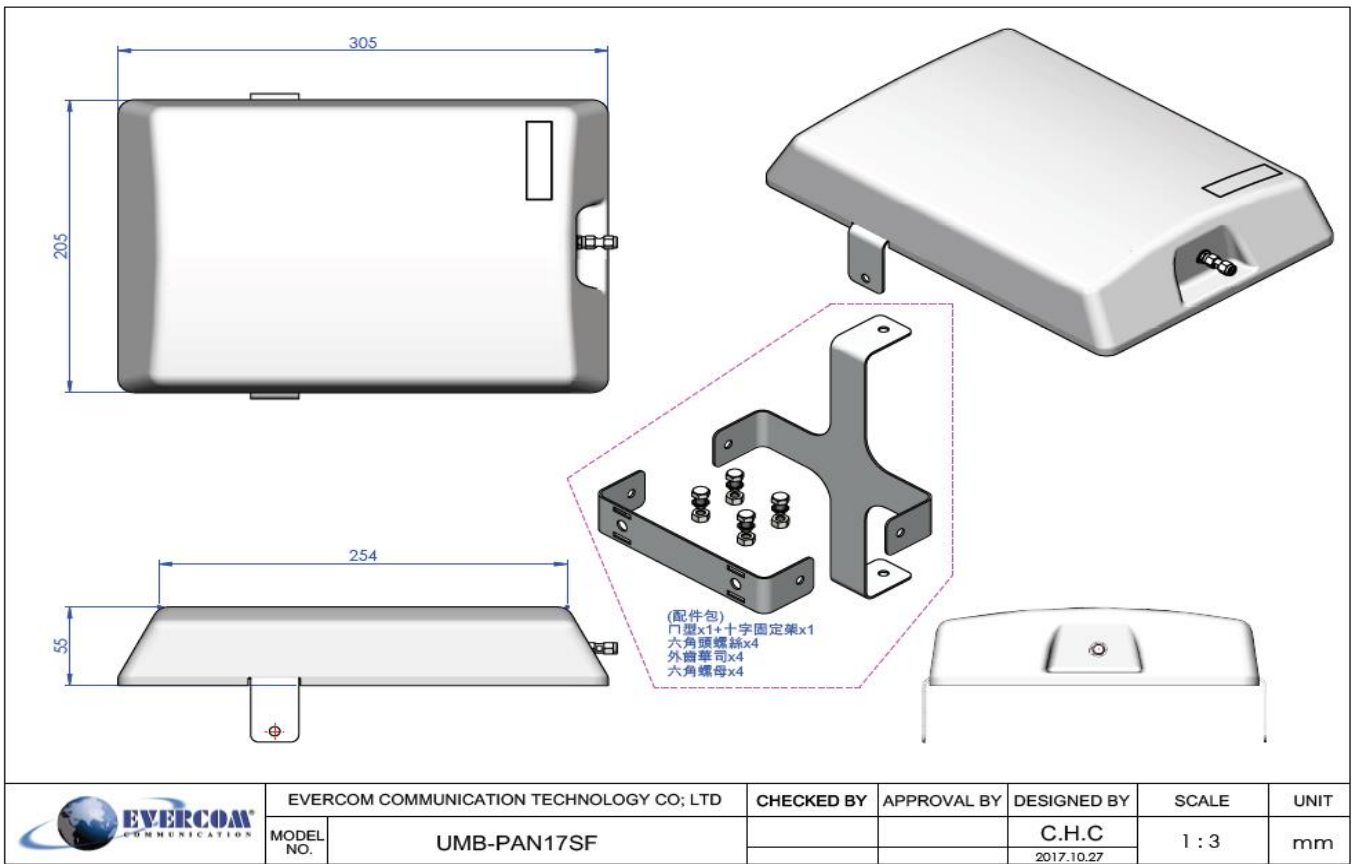
Max. Power: 100W

Dimensions: ϕ 305 x 205 x 53mm

© 2016 EVERCOM COMMUNICATION TECHNOLOGY CO., LTD.

No.108 Jiesin St. Taoyuan District Taoyuan City 33063, Taiwan R.O.C.

Tel: +886-3- 376- 5678 Fax: +886-3- 376- 5319 E-Mail: service@evercomtech.com



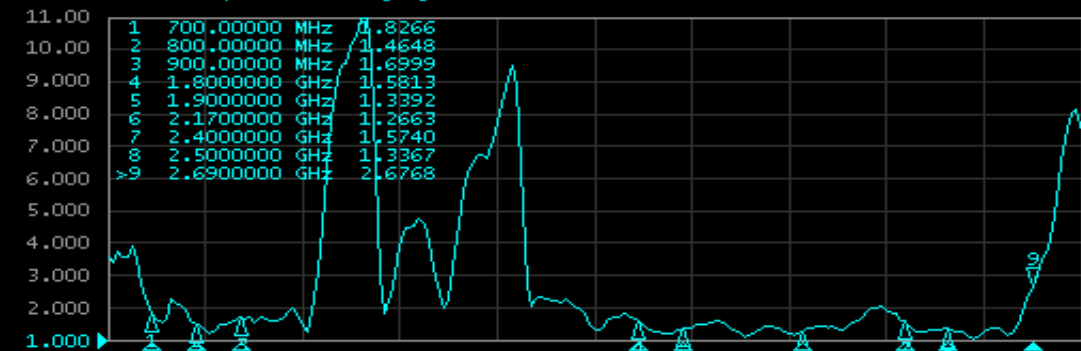
1 Active Ch/Trace 2 Response 3 Stimulus 4 Mkr/Analysis 5 Instr State

Evercom Communication Technology Co.,Ltd.

▶ Tr1 S11 Log Mag 10.00dB/ Ref 0.000dB [R0]



Tr2 S11 SWR 1.000/ Ref 1.000 [R0]



1 Start 600 MHz

IFBW 70 kHz

Stop 2.8 GHz Cor |

Meas Stop ExtRef Ready Svc 2016-03-18 09:41

System

Print

Abort Printing

Printer Setup...

Invert Image
ON

Dump
Screen Image...

Multiport Test Set
Setup

Misc Setup

Backlight
ON

Firmware
Revision

Description for EUT testing position

Place and fix it with tape shown as below.

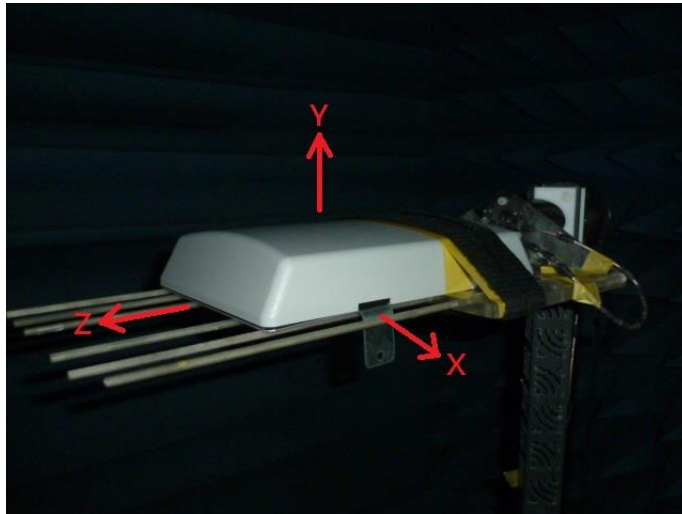


Fig. 5-1 Test position Free Space – WG-UMB-PAN17SF-1

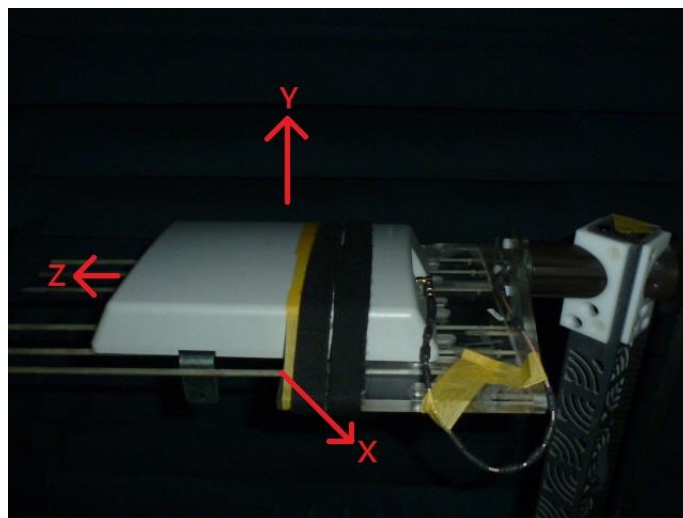
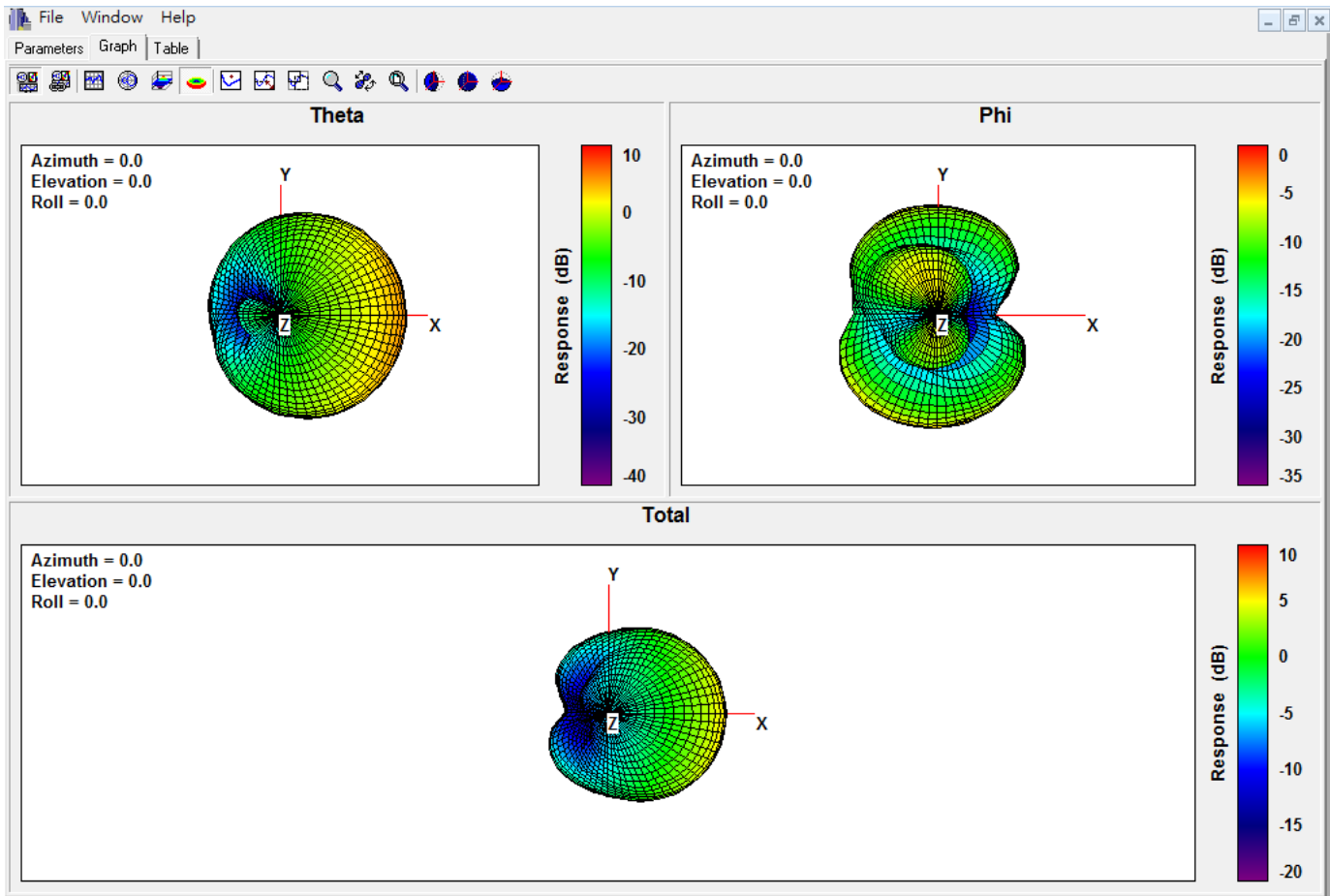


Fig. 5-2 Test position Free Space – WG-UMB-PAN17SF-2

4G LTE

Appendix A Pattern Plots

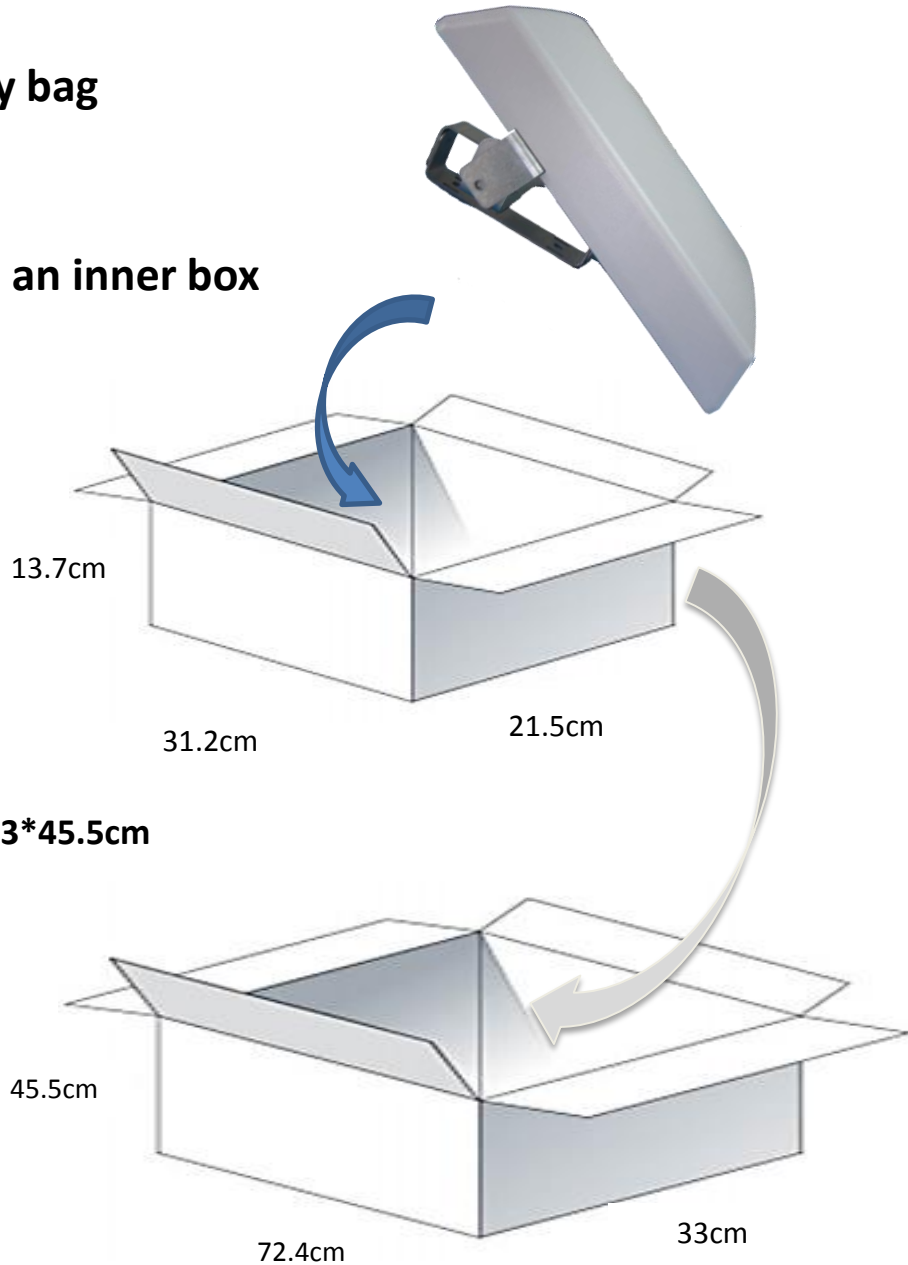
3D Pattern



Packaging

Antenna pack in a poly bag

A set of antenna put in an inner box



10 PCS Per Carton

Carton Dimensions: 72.4*33*45.5cm

4G LTE

Antenna Applications

