

4G LTE

4G LTE Antenna

UMB-YAGI-o2DX

Frequency :700~2700MHZ

Gain : 14dBi

Connector : FME/F to N/F

V.S.W.R : <1.5:1

Impedance: 50 ohm

Cable : N/A

Weight : 1.5kgs

Material : Aluminum

Polarization: Linear (H) or (V)

Color: Silver Painting

Mount: U-Bolts

Temperature : -20°C to +65°C

Max. Power: 100W

Light Port : DC Ground

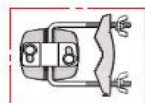
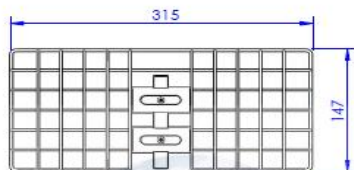
Dimension : ϕ 1005x126mm (Two Layer)



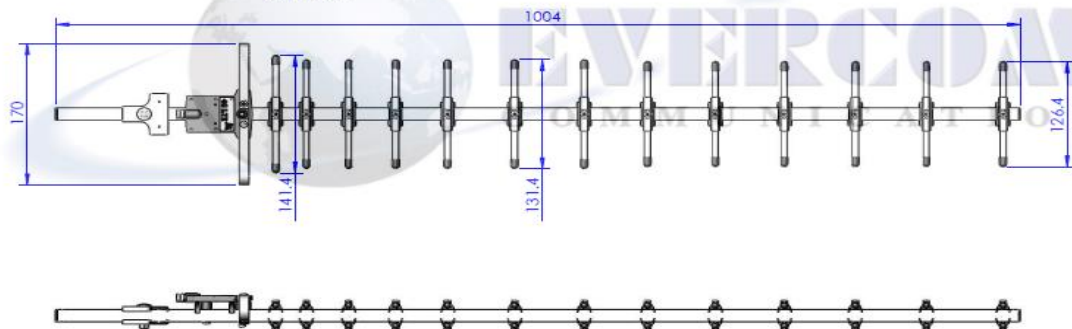
© 2016 EVERCOM COMMUNICAITON TECHNOLOGY CO., LTD.

No.108 Jiesin St. Taoyuan District Taoyuan City 33063, Taiwan R.O.C.

Tel: +886-3- 376- 5678 Fax: +886-3- 376- 5319 E-Mail: service@evercomtech.com



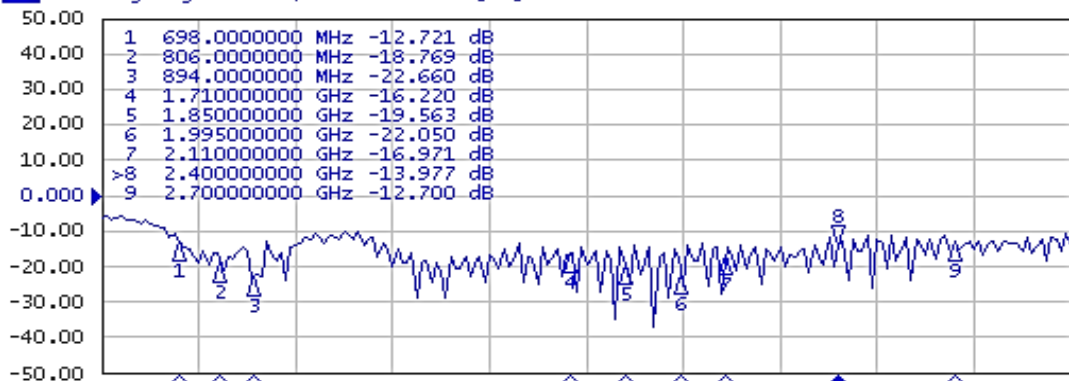
上下固定架+U型鐵



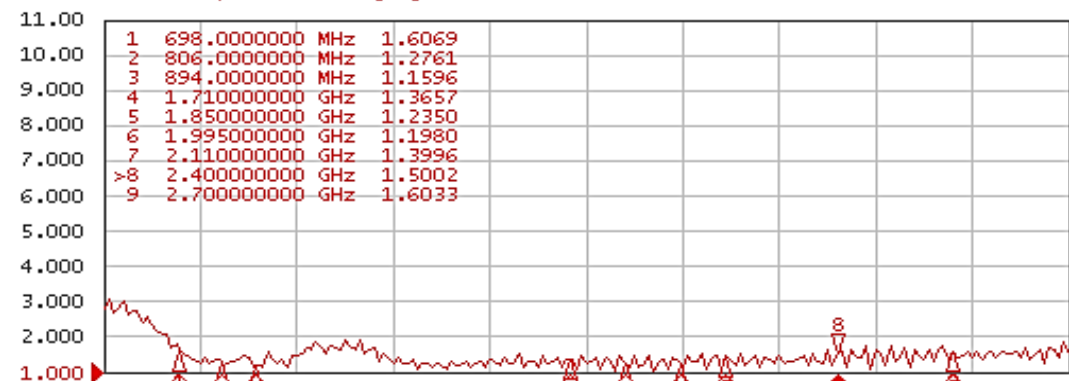
	EVERCOM COMMUNICATION TECHNOLOGY CO.; LTD			CHECKED BY	APPROVAL BY	DESIGNED BY	SCALE	UNIT
	MODEL NAME	MODEL NO.	UMB-YAGI02DX/0		<i>Ben</i> 20160505	C.H.C 2015.05.05	1 : 5	mm

1 Active Ch/Trace 2 Response 3 Stimulus 4 Mkr/Analysis 5 Instr State

Tr1 S11 Log Mag 10.00dB/ Ref 0.000dB [R0]



Tr2 S11 SWR 1.000/ Ref 1.000 [R0]



Response (Open)

85033E

Select Port

1 *

Open

Open

Load (Optional)

Broadband

Done

Cancel

Return

1 Start 500 MHz

IFBW 70 kHz

Stop 3 GHz

Cor

Meas | Stop | ExtRef | Ready | Svc | 2018-11-06 10:18

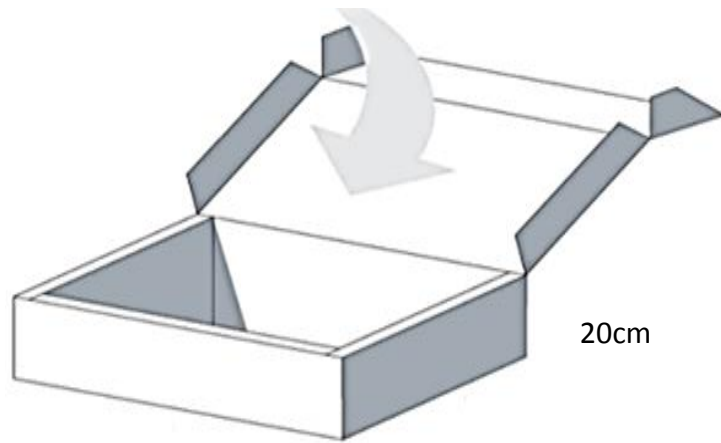
4G LTE

Packaging



A set antenna put in a white box

8cm



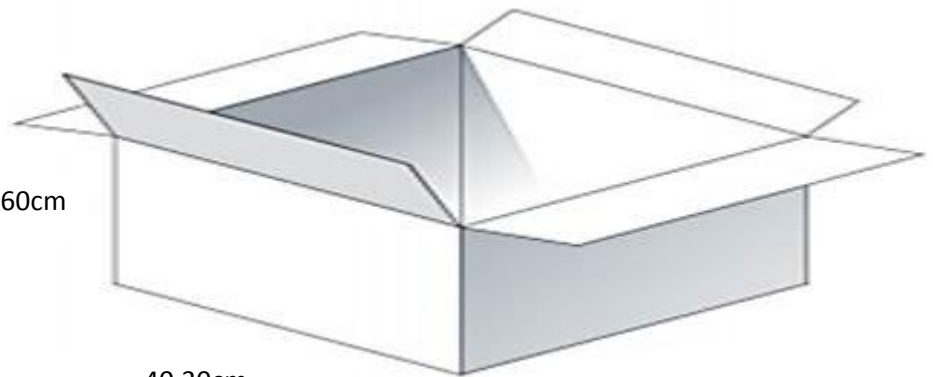
20cm

100cm

10 pcs white box per carton

Carton Dimensions:103.3*40.3*37.6cm

37.60cm



40.30cm

103.30cm

4G LTE

Antenna Applications

