

# 5G LTE Antenna

## LTB-DP07SM



Frequency : 700~2700/3400~3800MHZ

Connector : SMA/M (Optional)

Gain : 3dBi

V.S.W.R : <2.5:1

Impedance : 50 ohm

Weight : 8g

Material : BRASS/ POM

Polarization : Linear (V or H)

Can be Rotated 360 degrees

Color : Black

Mount : SMA/M

Temperature : -20°C to + 65°C

Wave: 1/4

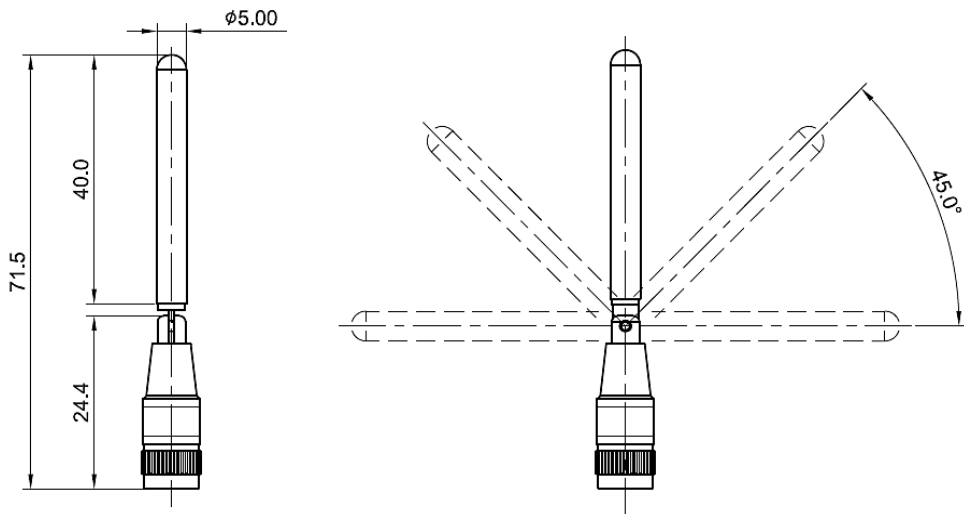
Max. Power : 10W

Dimension :  $\varnothing$ 71.5 x 5 mm

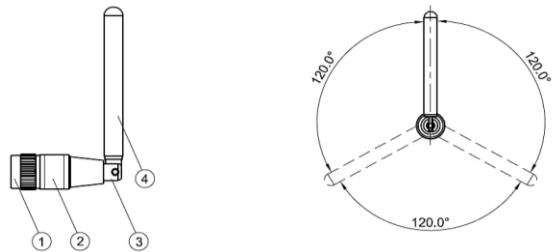
EVERCOM COMMUNICAITON TECHNOLOGY CO., LTD.

No.108 Jiesin St. Taoyuan District Taoyuan City 33063, Taiwan R.O.C.

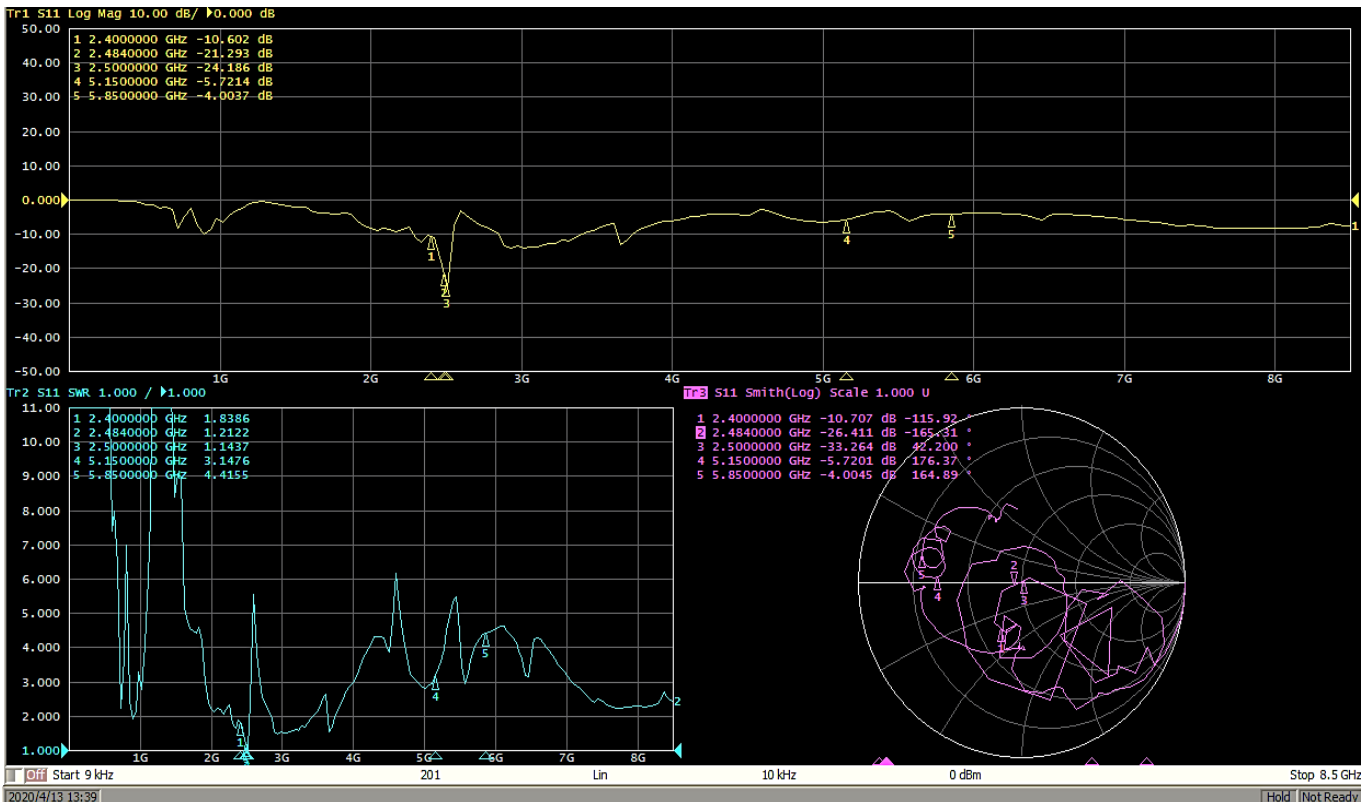
Tel: +886-3- 376- 5678 Fax: +886-3- 376- 5319 E-Mail: [service@evercomtech.com](mailto:service@evercomtech.com)



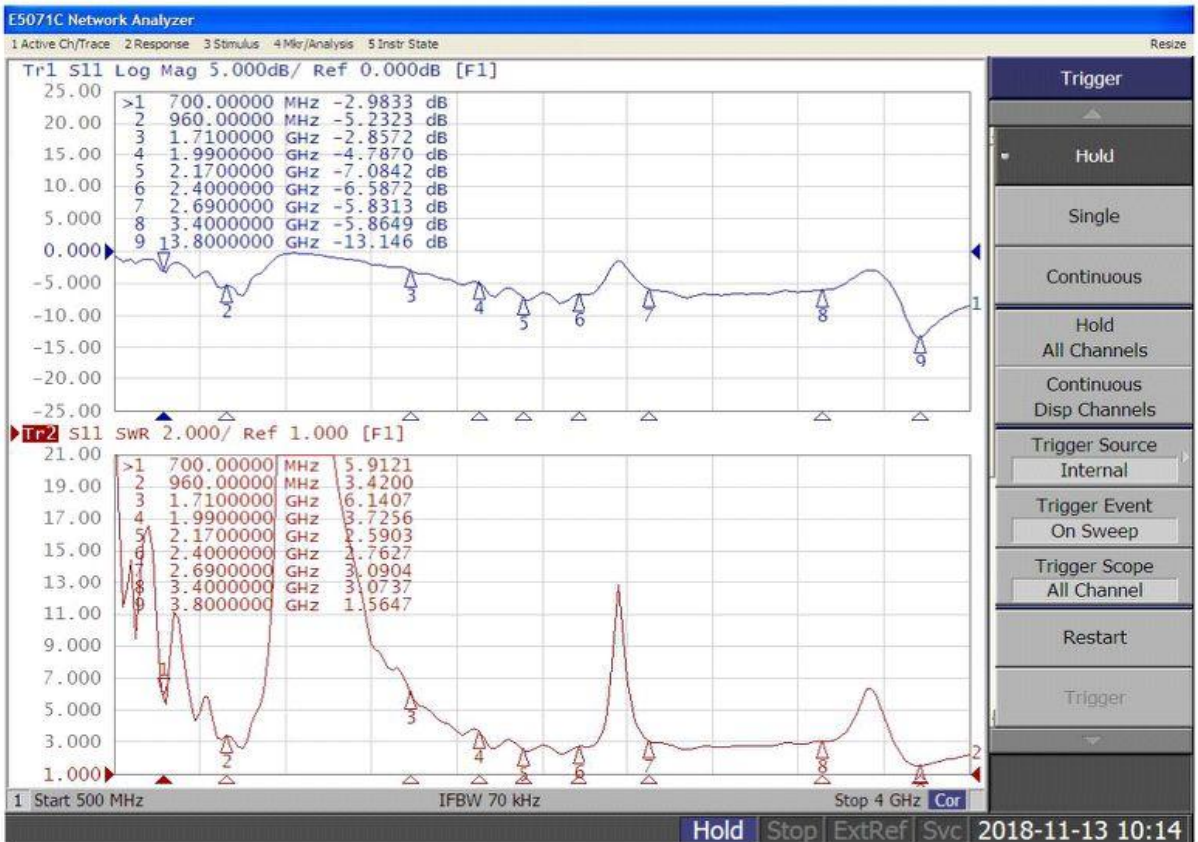
4	SMA Plug	Brass	Ni	1
3	Cap	POM	Black	1
2	Hinge	Brass	Ni	1
1	Housing	POM	Black	1
No.	Name	Material	Finish	Q'ty



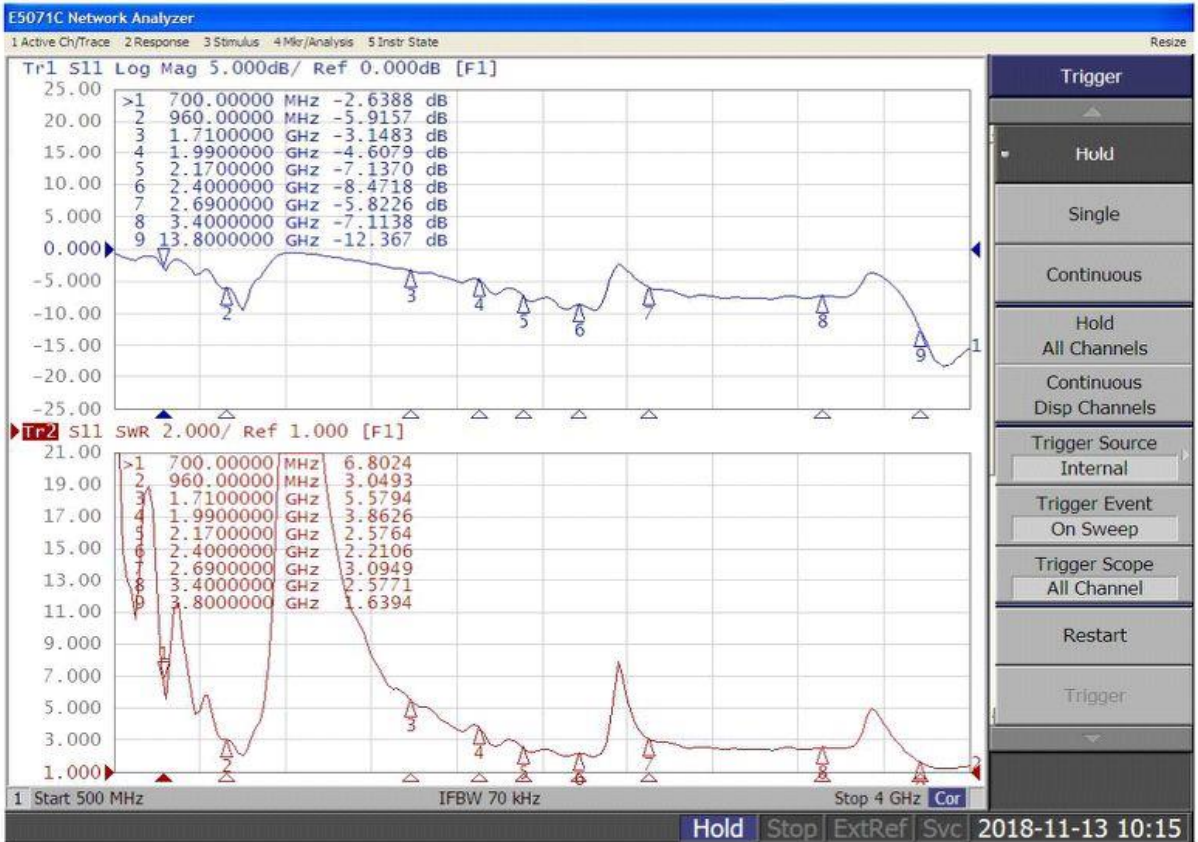
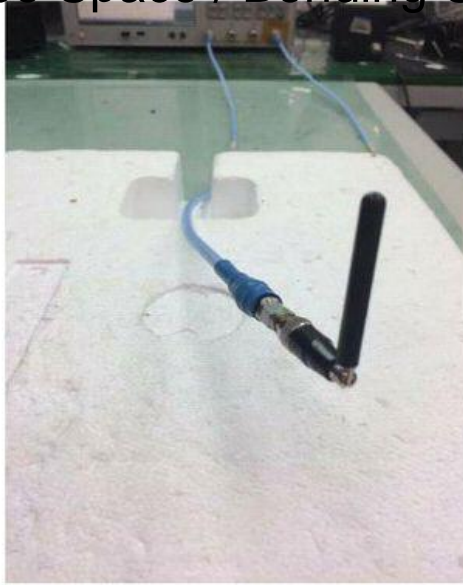
	EVERCOM COMMUNICATION TECHNOLOGY CO.; LTD		CHECKED BY	APPROVAL BY	DESIGNED BY	SCALE	UNIT
	MODEL NAME	MODEL NO.	LTB-DP07SM	<i>Ben</i>	C.H.C	1 : 2	mm
				20170621	2017.06.21		



# SWR / Return Loss Test Data Free Space / Straight Status

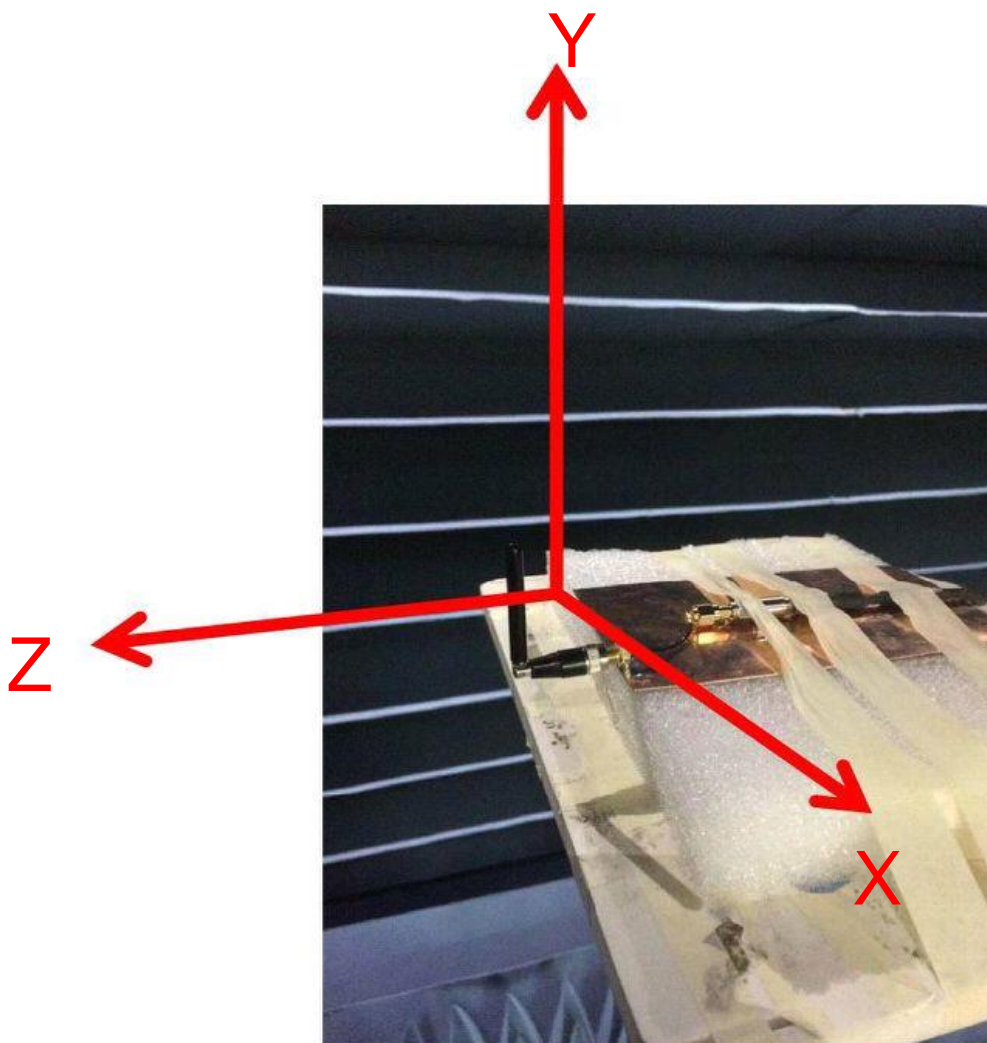


# SWR / Return Loss Test Data Free Space / Bending Status

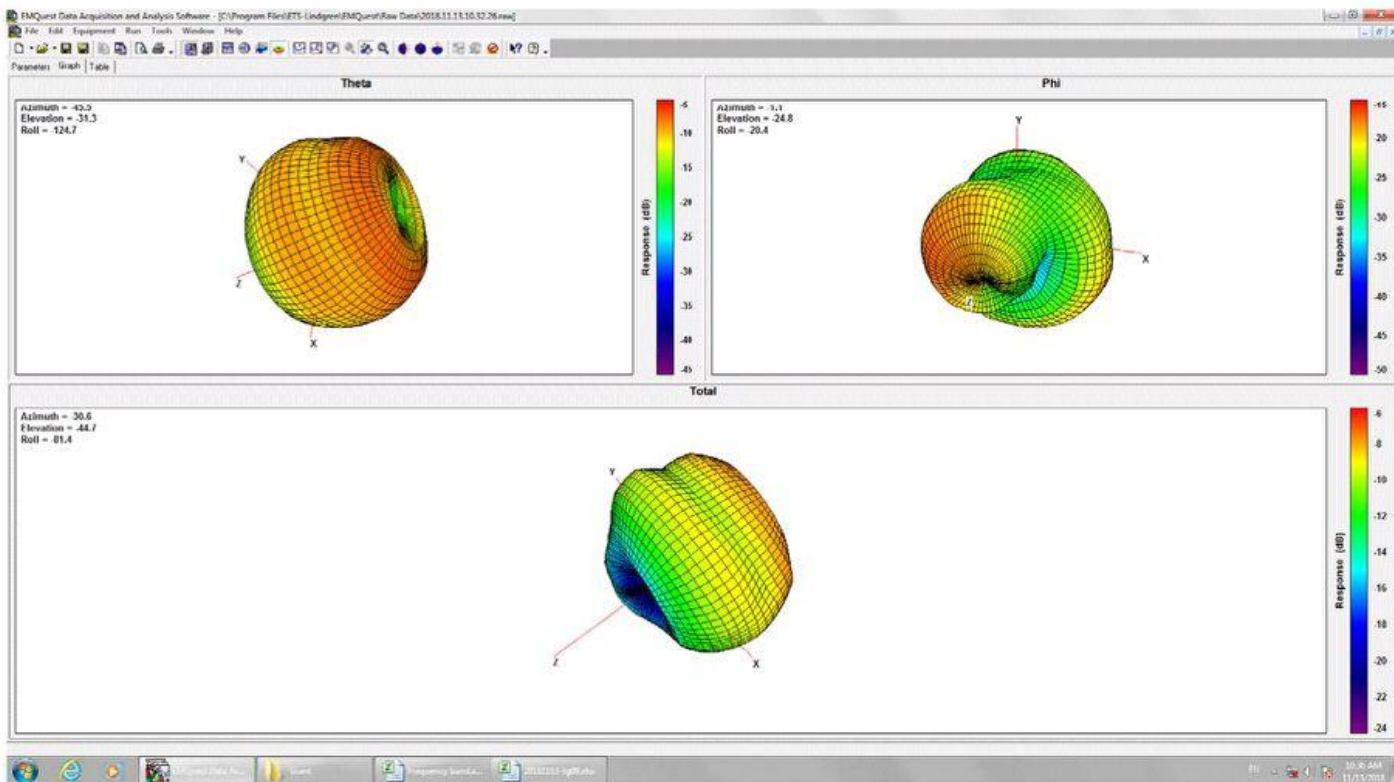
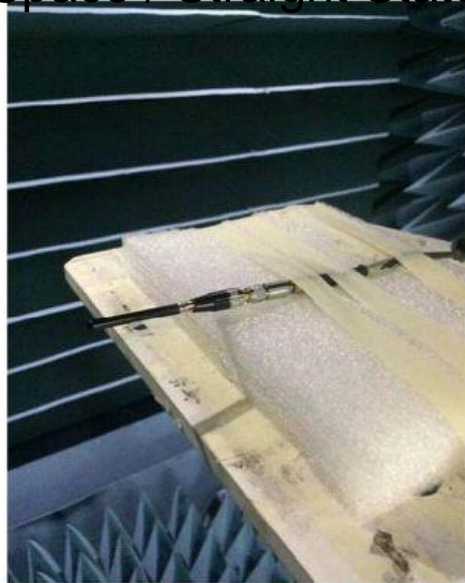


# Antenna Gain / Efficiency Test Data

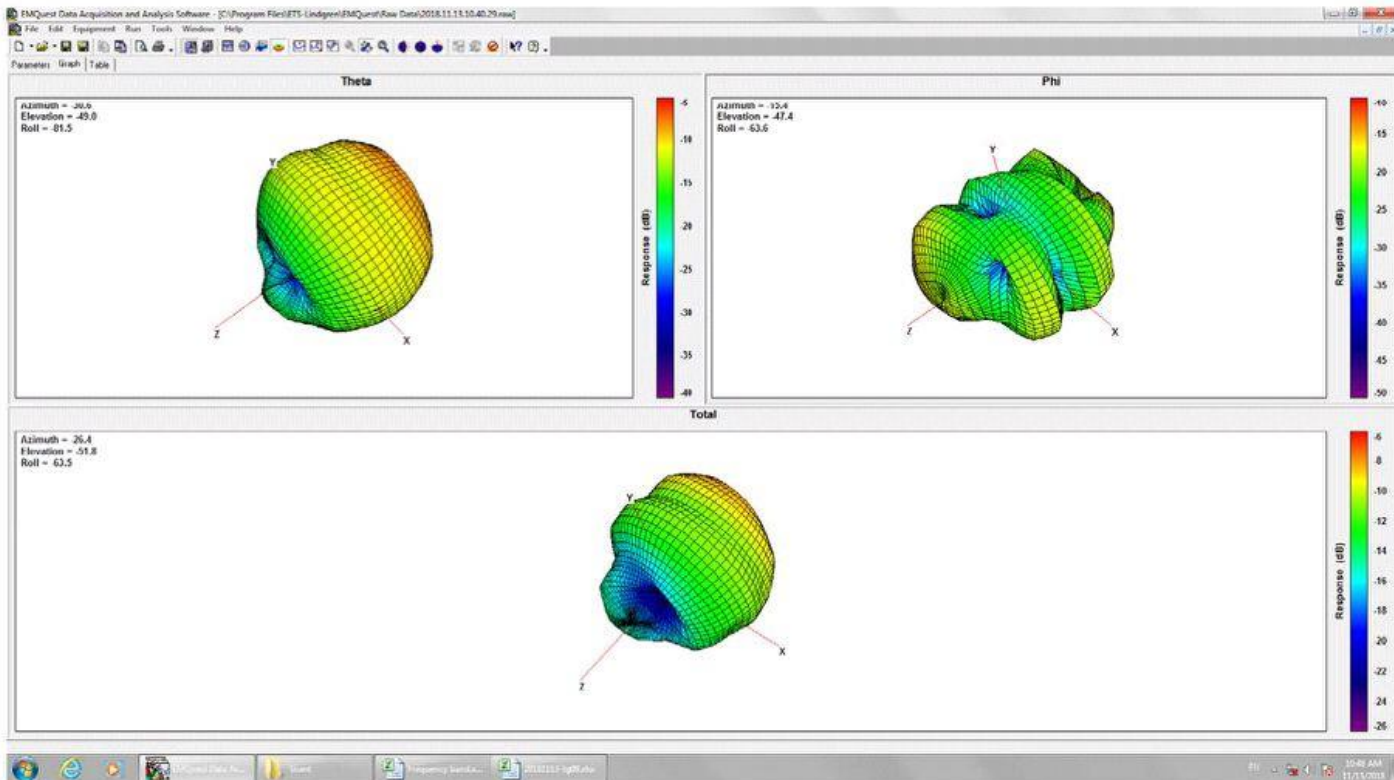
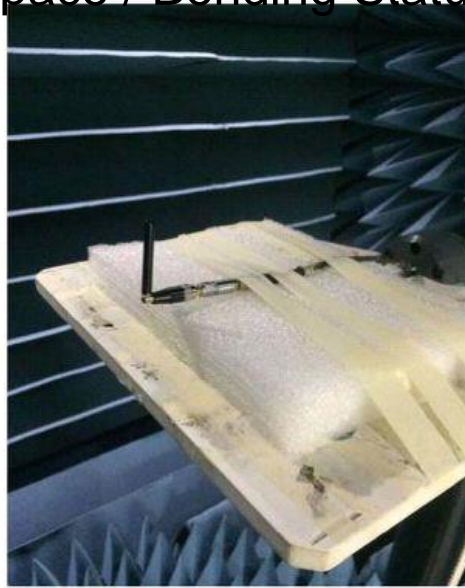
## Test Setup and Angle Definition



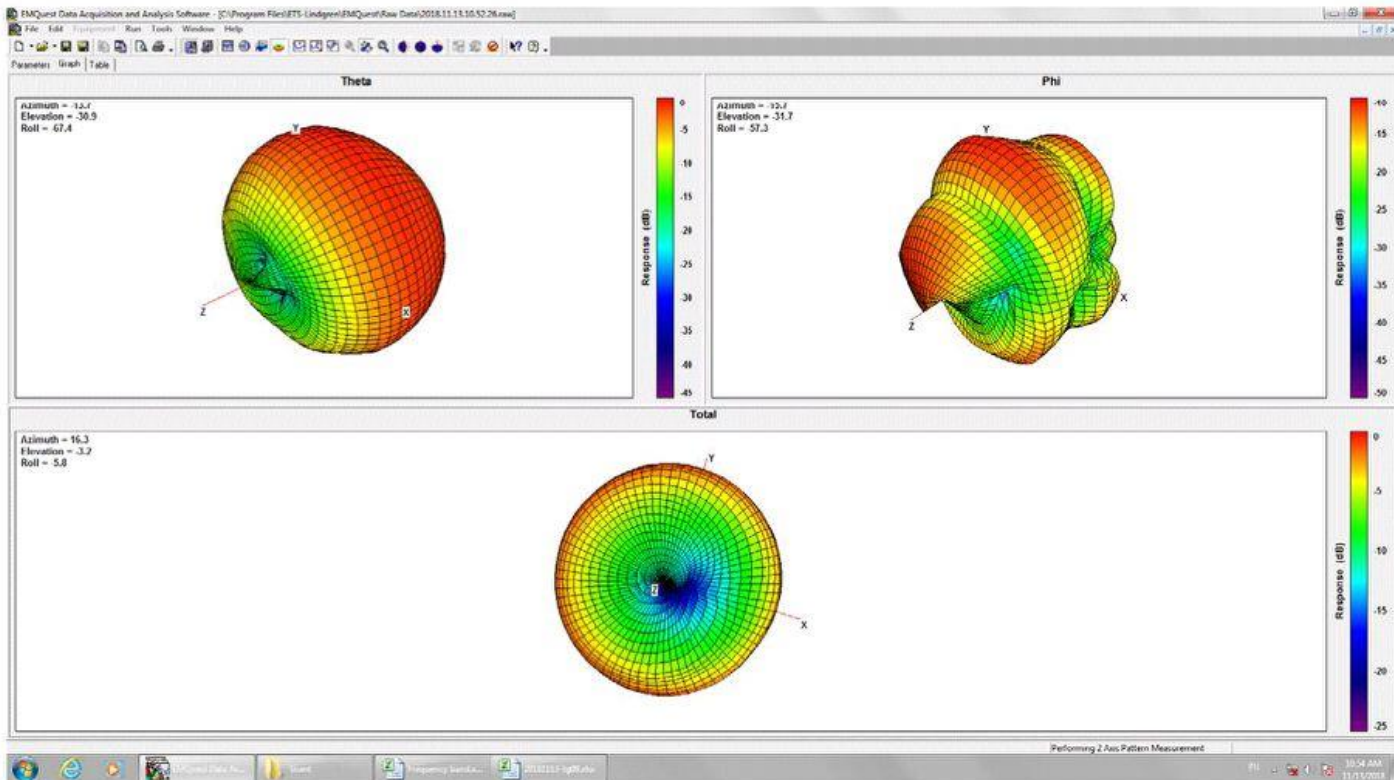
# Antenna Gain / Efficiency Test Data Free Space / Straight Status



# Antenna Gain / Efficiency Test Data Free Space / Bending Status

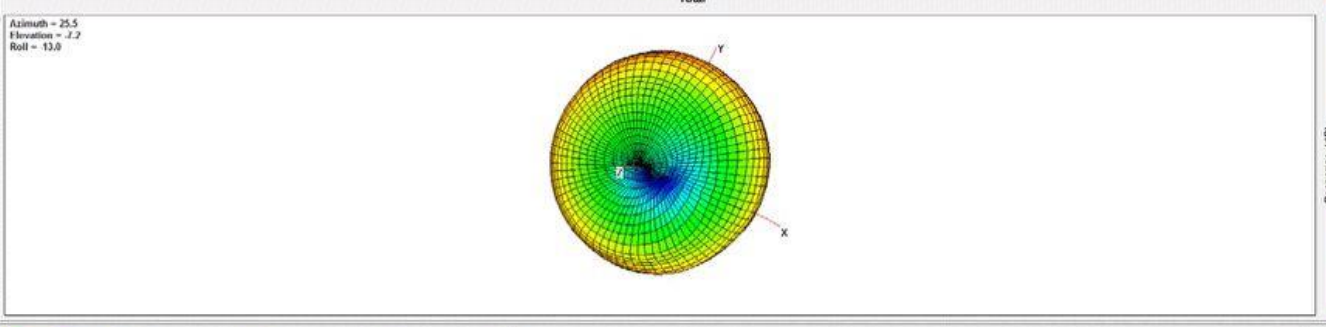
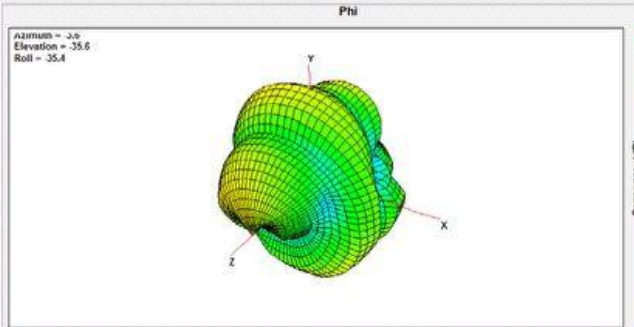
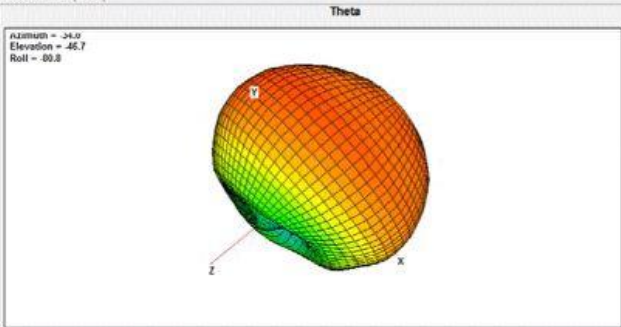
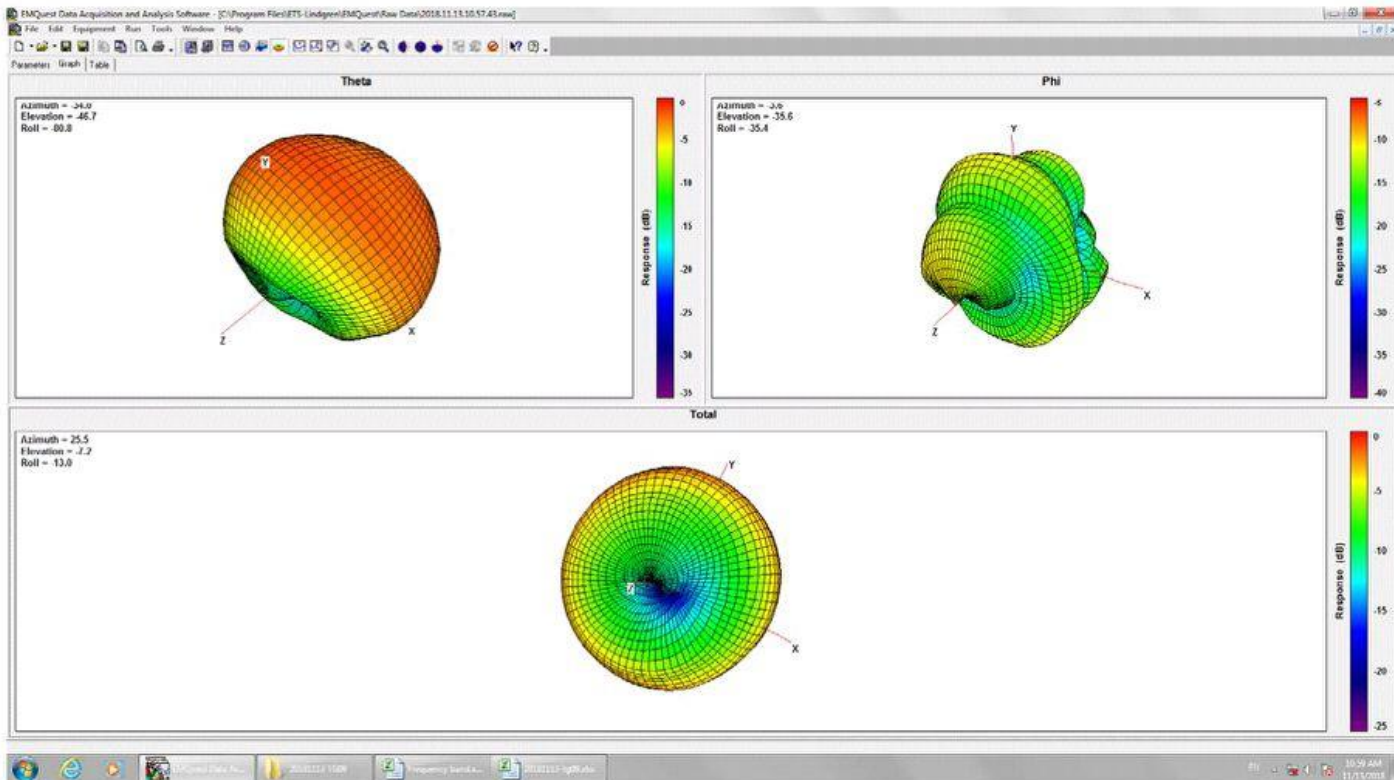


# Antenna Gain / Efficiency Test Data 150 x 90mm / Straight Status



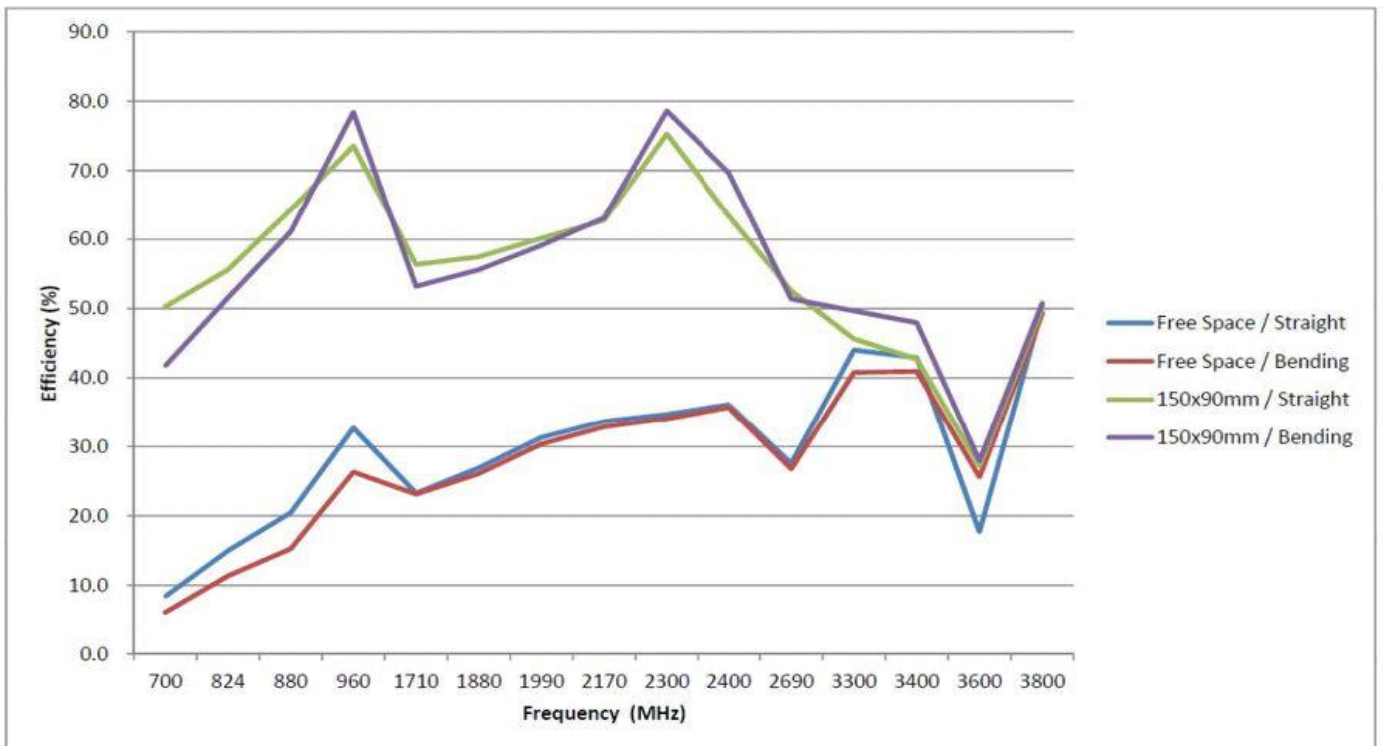


# Antenna Gain / Efficiency Test Data 150 x 90mm / Bending Status



# Antenna Gain / Efficiency Test Data Data Summary

	Frequency (MHz)	700	824	880	960	1710	1880	1990	2170	2300	2400	2690	3300	3400	3600	3800
Free Space Straight	Efficiency (dB)	-10.8	-8.2	-6.9	-4.9	-6.3	-5.7	-5.0	-4.7	-4.6	-4.4	-5.6	-3.6	-3.7	-7.5	-3.0
	Efficiency (%)	8.4	15.0	20.5	32.7	23.3	26.9	31.3	33.7	34.7	36.1	27.6	44.0	42.9	17.7	50.1
	Gain (dBi)	-6.8	-5.1	-4.0	-2.3	-2.6	-1.8	-1.0	-0.3	0.3	0.6	-0.2	1.4	0.8	-2.5	1.7
Free Space Bending	Efficiency (dB)	-12.2	-9.4	-8.2	-5.8	-6.4	-5.8	-5.2	-4.8	-4.7	-4.5	-5.7	-3.9	-3.9	-5.9	-3.1
	Efficiency (%)	6.1	11.4	15.3	26.3	23.1	26.1	30.4	32.9	34.1	35.7	26.8	40.8	40.9	25.6	49.3
	Gain (dBi)	-7.5	-5.1	-3.7	-1.4	-2.8	-2.1	-1.2	-0.6	0.0	0.4	-0.2	1.1	1.2	-1.6	1.9
150x90mm Straight	Efficiency (dB)	-3.0	-2.5	-1.9	-1.3	-2.5	-2.4	-2.2	-2.0	-1.2	-2.0	-2.8	-3.4	-3.7	-5.6	-3.0
	Efficiency (%)	50.3	55.6	64.3	73.6	56.4	57.5	60.2	62.8	75.3	63.4	52.6	45.6	42.7	27.2	50.1
	Gain (dBi)	-0.1	0.8	2.0	2.4	2.7	3.5	3.3	3.9	4.6	3.4	3.3	3.4	1.7	1.2	5.8
150x90mm Bending	Efficiency (dB)	-3.8	-2.9	-2.1	-1.1	-2.7	-2.5	-2.3	-2.0	-1.0	-1.6	-2.9	-3.0	-3.2	-5.5	-2.9
	Efficiency (%)	41.7	51.6	61.1	78.4	53.2	55.6	59.1	63.1	78.6	69.7	51.4	49.7	48.0	28.0	50.7
	Gain (dBi)	-1.1	0.5	1.5	3.1	2.5	3.3	3.2	3.8	4.7	4.2	3.1	4.8	3.7	1.4	6.2



## Packaging

A antenna 1 zipper bag  
/100 pcs one big PE bag

1000 PCS Per Carton=9.5KG  
Carton Dimensions:40\*30\*20cm

