

## CB & VHF/UHF Series



*The World Wide Leader in Antenna*

# CB ANTENNA

## CB-2307N



Frequency : 26-28Mhz

V.S.W.R : <1.2:1

Max Power: 1200W

Impedance : 50 Ohm

Material :ABS/ZINC/ SUS

Mount:  $\varnothing$ 16mm , "S0239"

Connector : PL259 (Optional)

Weight: 920g

Dimension : 1909x45.50mm

Color : Black

Polarization: Vertical

Temperature:-20°C to +60°C

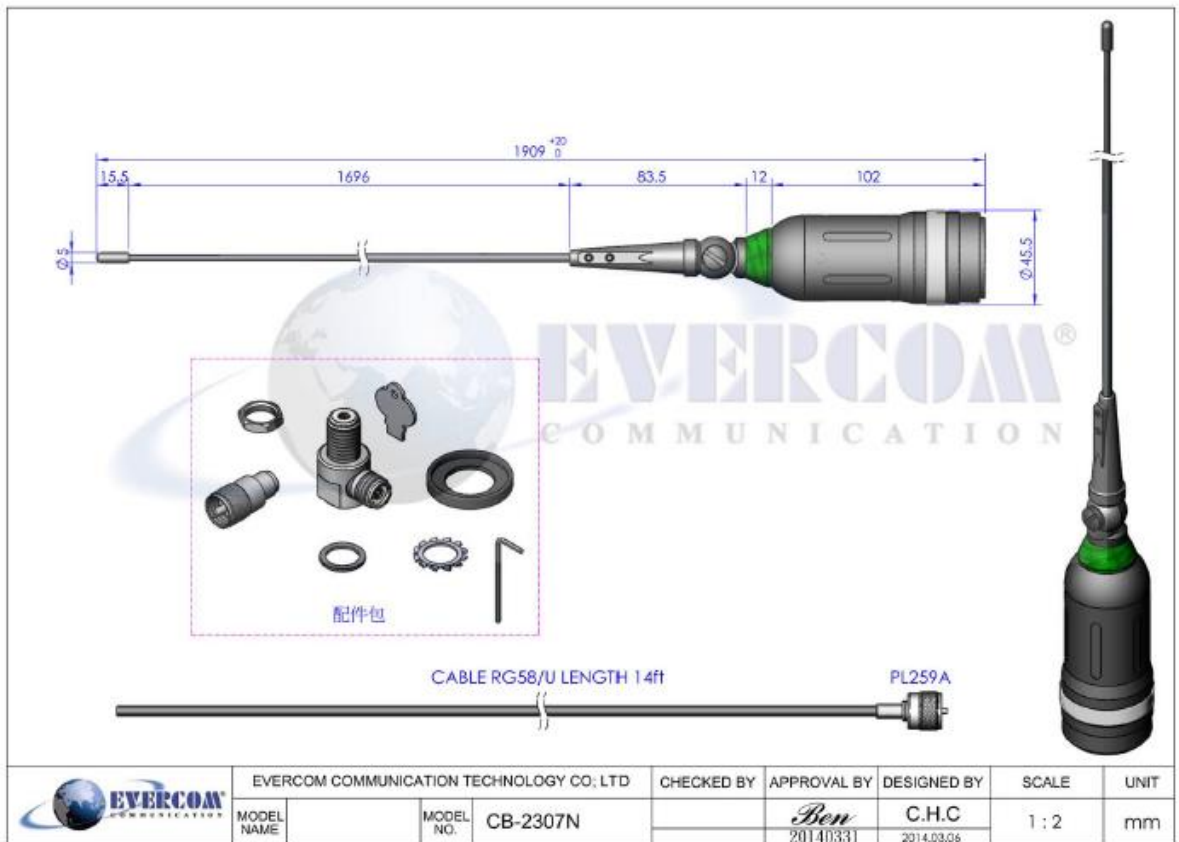
**EVERCOM COMMUNICAITON TECHNOLOGY CO., LTD.**

No.108 Jiesin St. Taoyuan District Taoyuan City 33063, Taiwan R.O.C.

Tel: +886-3-376-5678 Fax: +886-3-376-5319 E-Mail: [service@evercomtech.com](mailto:service@evercomtech.com)



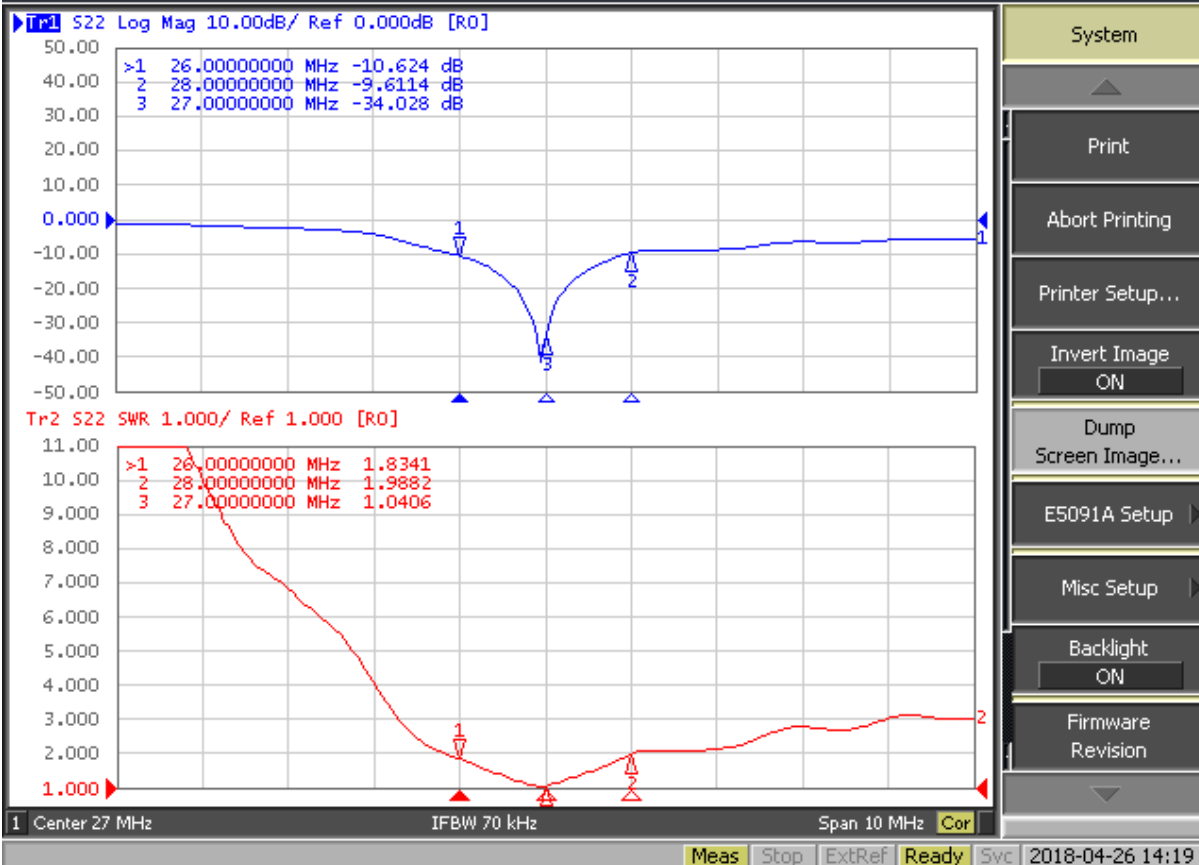
ISO 9001



	EVERCOM COMMUNICATION TECHNOLOGY CO., LTD			CHECKED BY	APPROVAL BY	DESIGNED BY	SCALE	UNIT
	MODEL NAME	MODEL NO.	CB-2307N		Ben 20140331	C.H.C 20140306	1:2	mm

Evercom Communication Technology Co., Ltd. Frequency Inspection Report

1 Active Ch/Trace 2 Response 3 Stimulus 4 Mkr/Analysis 5 Instr State



Item No. :FG-CB-2307N

Inspector: Amber

**CB & VHF/UHF  
Series**



*The World Wide Leader in Antenna*

# Packaging

**\*1 pcs Antenna PE bag/ each**



**\*25 pcs Bulk /per Carton  
Dimensions:200\*20\*20cm**

