

**CB & VHF/UHF
Series**



The World Wide Leader in Antenna

CB ANTENNA

CB-2301N



Frequency : 26-28Mhz

V.S.W.R : <1.2:1

Max Power : 100W

Impedance : 50 Ohm

Material : ABS/SUP

Mount : ϕ 12.5mm NP Type

Connector: PL259 (Optional)

Weight : 500g

Dimension: 318x45x5mm

Polarization : VERTICAL

Temperature : -20°C to +60°C

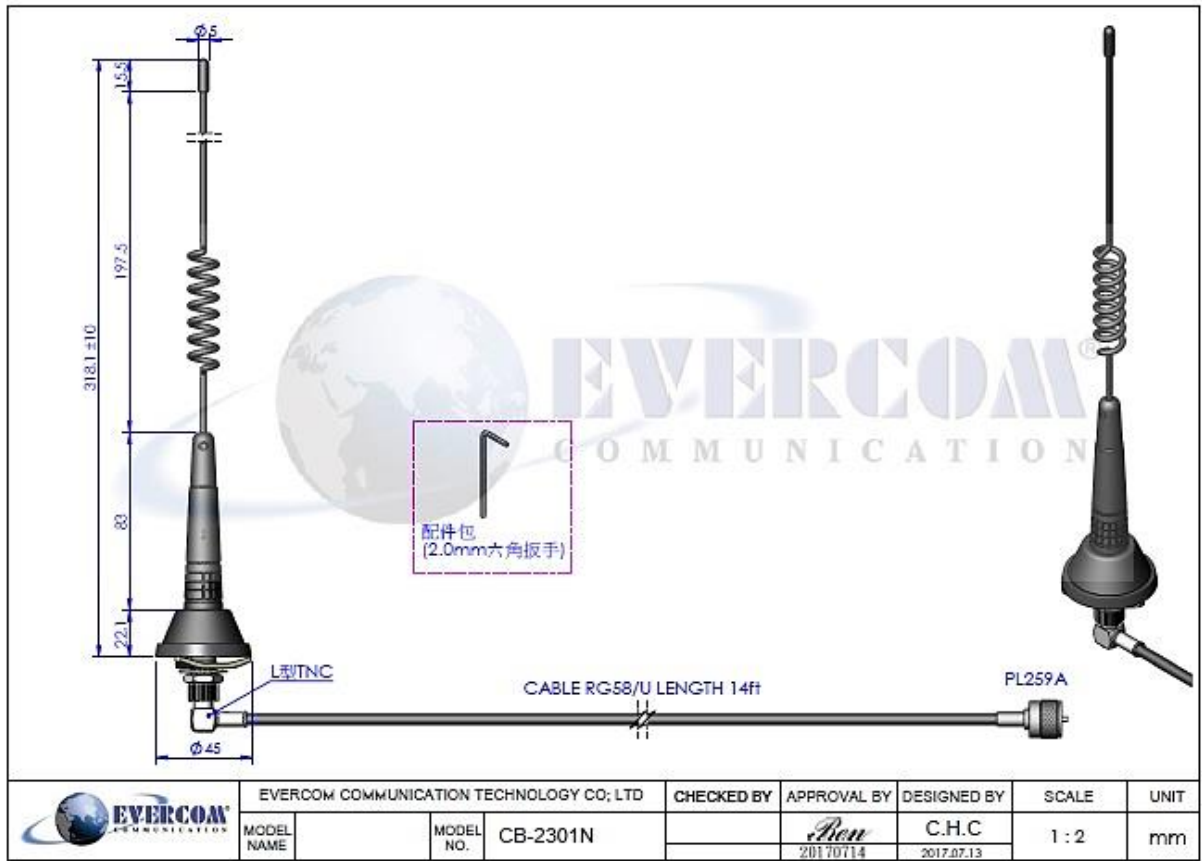
EVERCOM COMMUNICATION TECHNOLOGY CO., LTD.

No.108 Jiesin St. Taoyuan District Taoyuan City 33063, Taiwan R.O.C.

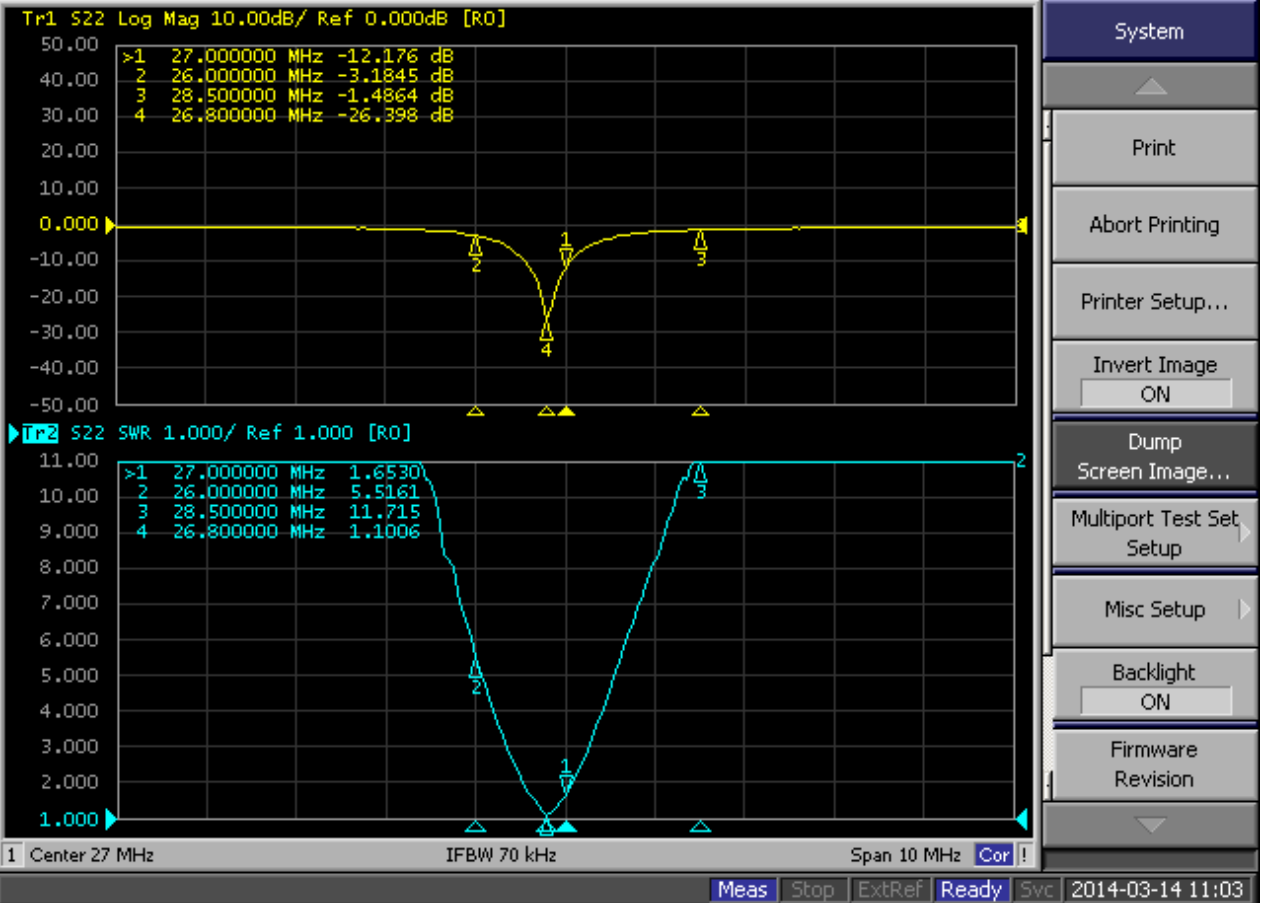
Tel: +886-3-376-5678 Fax: +886-3-376-5319 E-Mail: service@evercomtech.com



ISO 9001



1 Active Ch/Trace 2 Response 3 Stimulus 4 Mkr/Analysis 5 Instr State



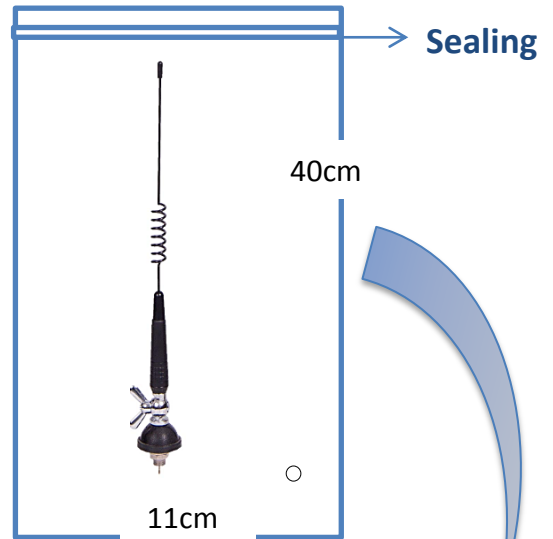
CB & VHF/UHF Series



The World Wide Leader in Antenna

Packaging

***1 pcs Antenna PE bag/ each**



***50 pcs Bulk /per Carton
Dimensions:50*40*20cm**

