

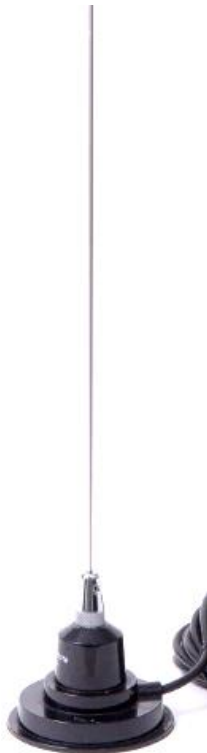
**CB & VHF/UHF
Series**



The World Wide Leader in Antenna

CB ANTENNA

CB-1346



Frequency : 26-28MHz

V.S.W.R : <1.2:1

Max Power: 300W

Impedance : 50 Ohm

Connector : PL259 (Optional)

Cable : 3meter of RG58 (Optional)

Material : ABS/SUS

Mount: Magnet

Weight: 500g

Dimension : 1065 x 90mm

Color : Black

Polarization: Vertical

Temperature:-20°C to +60°C

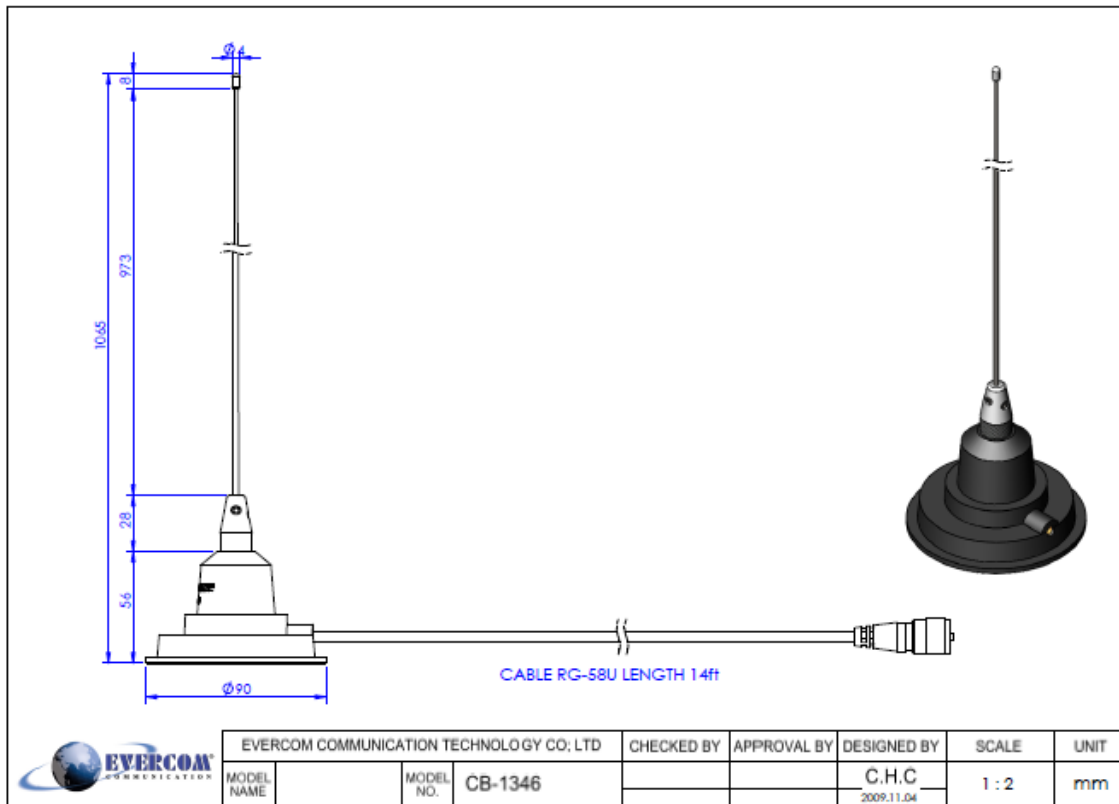
EVERCOM COMMUNICAITON TECHNOLOGY CO., LTD.

No.108 Jiesin St. Taoyuan District Taoyuan City 33063, Taiwan R.O.C.

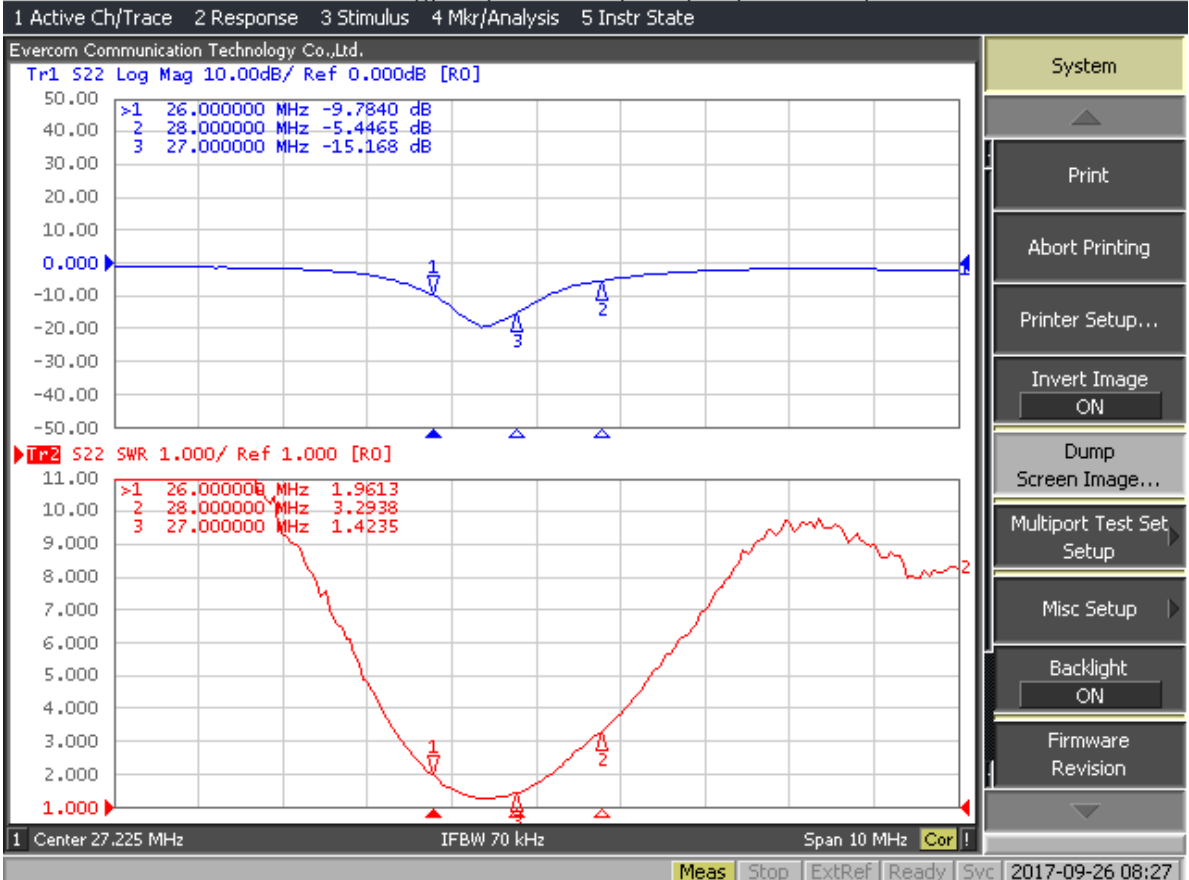
Tel: +886-3-376-5678 Fax: +886-3-376-5319 E-Mail: service@evercomtech.com



ISO 9001



Evercom Communication Technology Co., Ltd. Frequency Inspection Report



Item No. : FG-CB-1346

Inspector: Amber

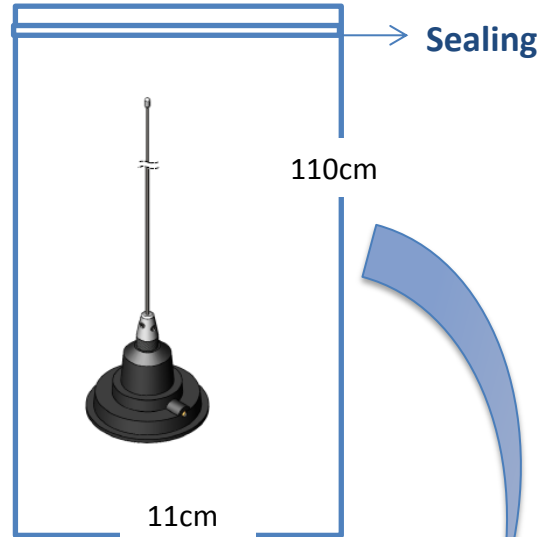
**CB & VHF/UHF
Series**



The World Wide Leader in Antenna

Packaging

***1 pcs Antenna PE bag/ each**



***20 pcs Bulk /per Carton
Dimensions:55*23*20cm**

