



The World Wide Leader in Antenna

GSM Antenna

TC-1322A



Frequency : 824-960 / 1710-1990/1800-1900MHZ

Gain : 5dB

V.S.W.R : <1.5:1

Impedance : 50 ohm

Connector : SMA/ Male (Optional)

Cable : 3.6meter of RG58 (Optional)

Length : 79.5 mm

Material : SUS/TPR/ Steel

Weight : \approx 340g

Color : Black

Polarization : Vertical

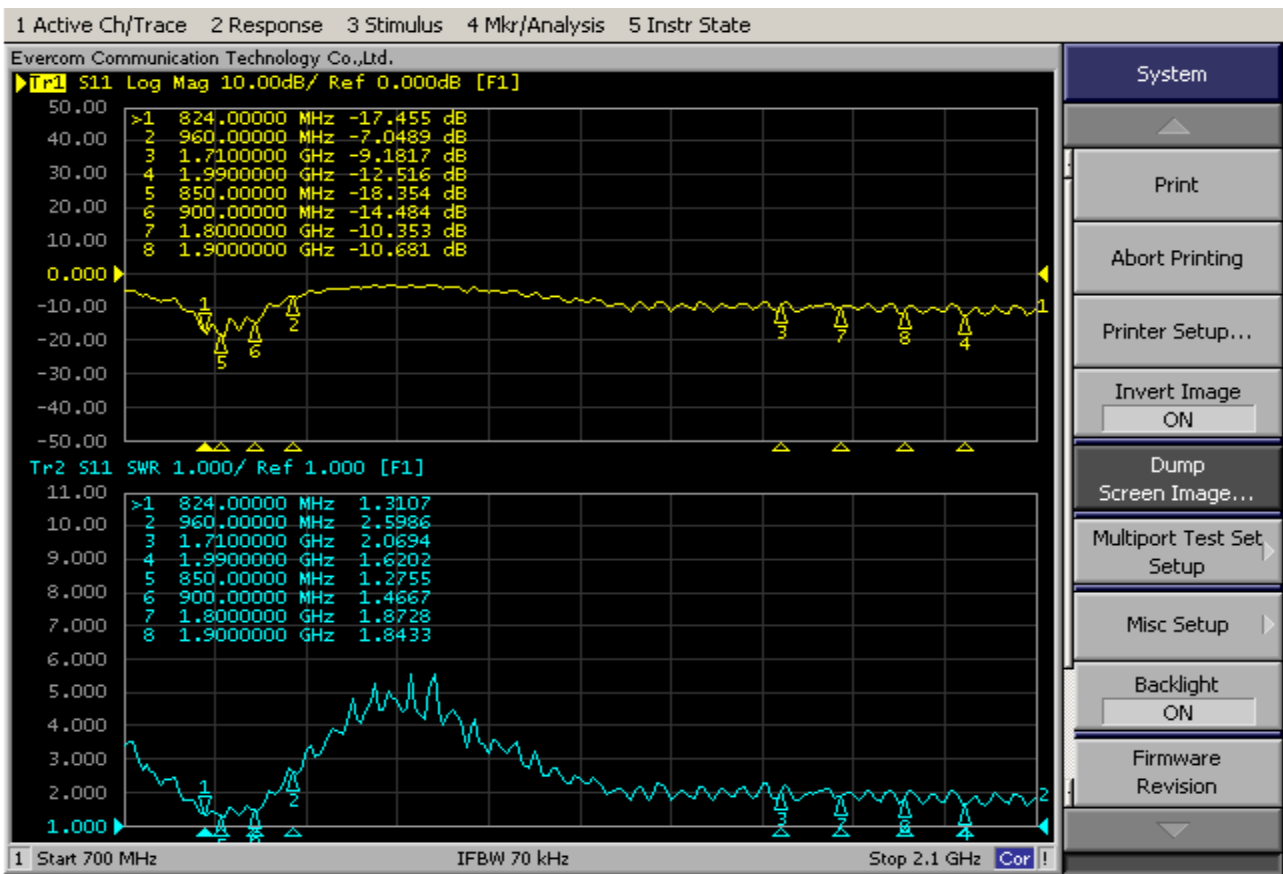
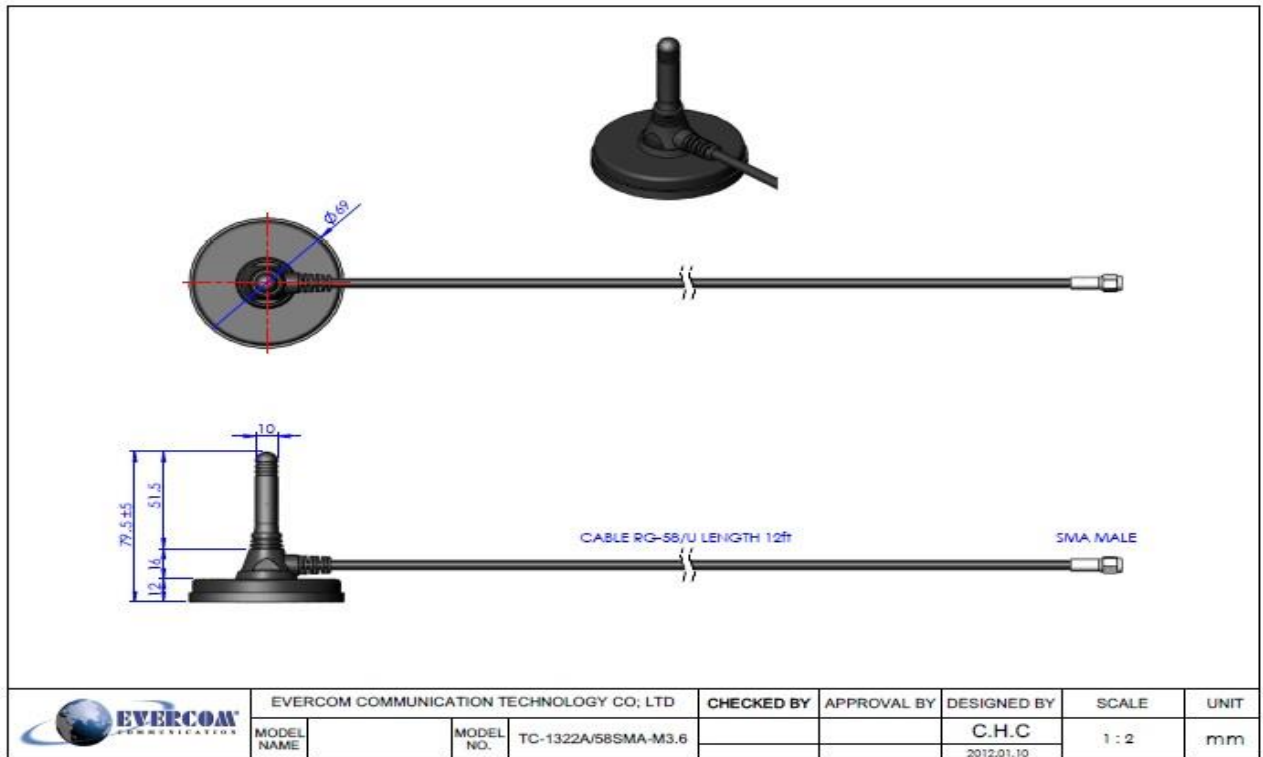
Mounting : Magnet Type

Temperature : -20°C to +60°C

EVERCOM COMMUNICAITON TECHNOLOGY CO., LTD.

No.108 Jiesin St. Taoyuan District Taoyuan City 33063, Taiwan R.O.C.

Tel: +886-3- 376- 5678 Fax: +886-3- 376- 5319 E-Mail: service@evercomtech.com





The World Wide Leader in Antenna

Packaging

***1 pc Antenna
PE bag/ each**

**50 pcs per carton
Carton Dimensions:50*40*20cm**

