



The World Wide Lead Antenn



# GSM Antenna

## TC-8811



Frequency : 900/ 1800 MHZ

Gain : 3dBi

V.S.W.R : <1.5:1

Impedance: 50 ohm

Connector : FME/ F (Optional)

Cable : RG58 (Optional)

Material : ABS Polymer

Weight: 180g

Color: Black

Polarization: Linear (H) or (V)

Mount: 3M Tape

Temperature:-20°C to +60°C

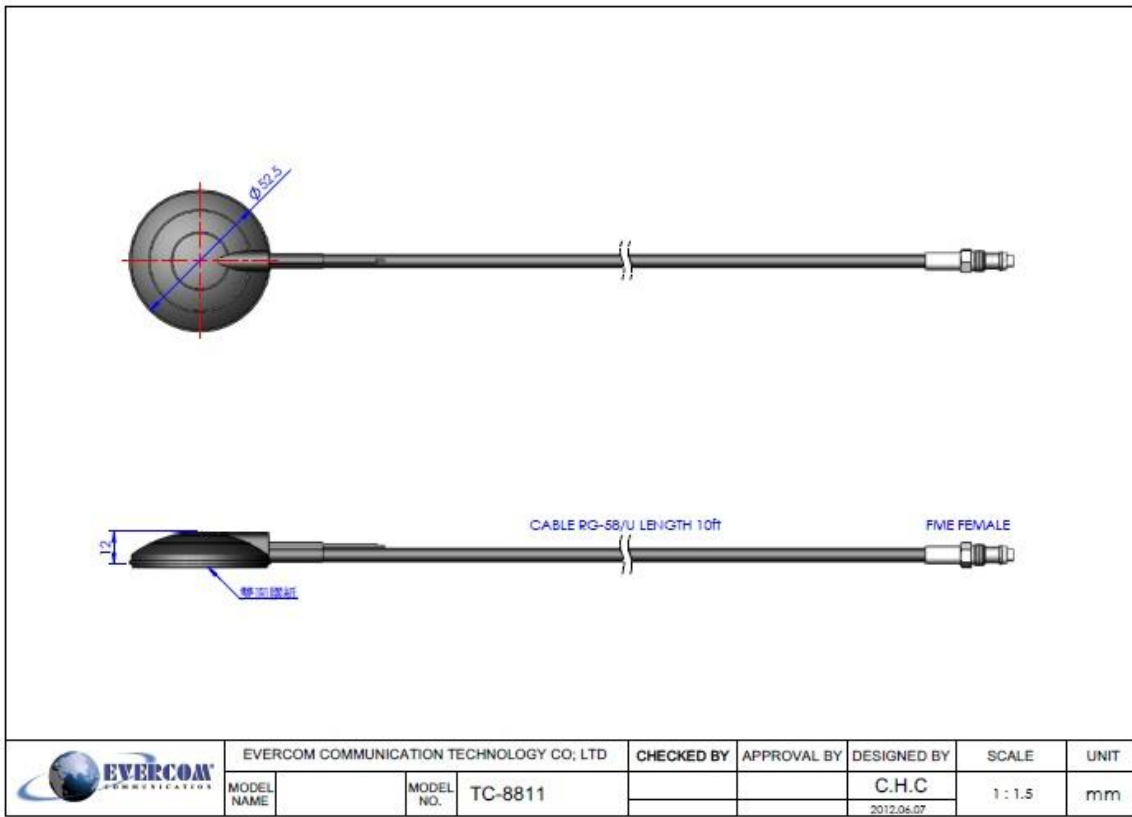
Max. Power: 25W

Dimension:  $\phi$ 52.5 x 12mm

EVERCOM COMMUNICAITON TECHNOLOGY CO., LTD.

No.108 Jiesin St. Taoyuan District Taoyuan City 33063, Taiwan R.O.C.

Tel: +886-3- 376- 5678 Fax: +886-3- 376- 5319 E-Mail: [service@evercomtech.com](mailto:service@evercomtech.com)

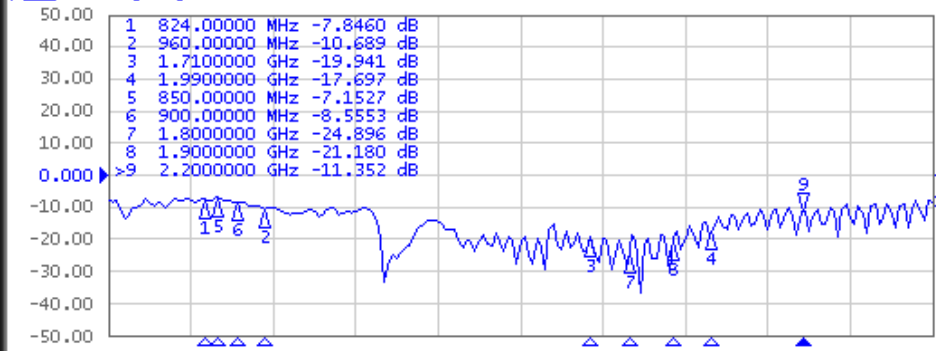


Evercom Communication Technology Co., Ltd. Frequency Inspection Report

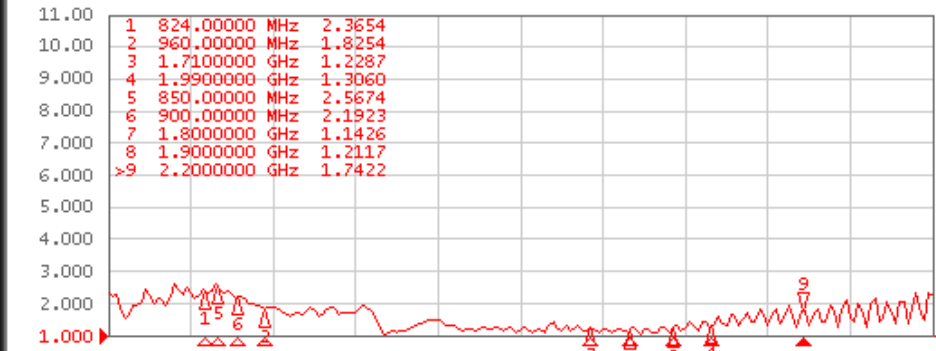
1 Active Ch/Trace 2 Response 3 Stimulus 4 Mkr/Analysis 5 Instr State

Evercom Communication Technology Co., Ltd.

Tr1 S11 Log Mag 10.00dB/ Ref 0.000dB [R0]



Tr2 S11 SWR 1.000/ Ref 1.000 [R0]



1 Start 600 MHz IFBW 70 kHz Stop 2.5 GHz Cor

System

Print

Abort Printing

Printer Setup...

Invert Image  
ON

Dump  
Screen Image...

Multiport Test Set  
Setup

Misc Setup

Backlight  
ON

Firmware  
Revision

Meas Stop ExtRef Ready Svc 2014-06-24 08:42

Item No. : FC-TC-8811

Inspector: Amber



*The World Wide Leader in Antenna*

# Packaging

**\*1 pc Antenna  
PE bag/ each**

**50 pcs per carton  
Carton Dimensions:40\*30\*20cm**

