



*The World Wide Leader in Antenna*

# GSM Antenna

## TC-8826



Frequency : 900/ 1800/ 2200 MHZ

Gain : 3dBi

Connector: SMA/Male (Optional)

V.S.W.R : <1.5:1

Impedance: 50 ohm

Cable : RG174 (Optional)

Weight: 20g

Material : PVC Mold

Polarization: Linear (H) or (V)

Color: Black

Mount: 3M Tape

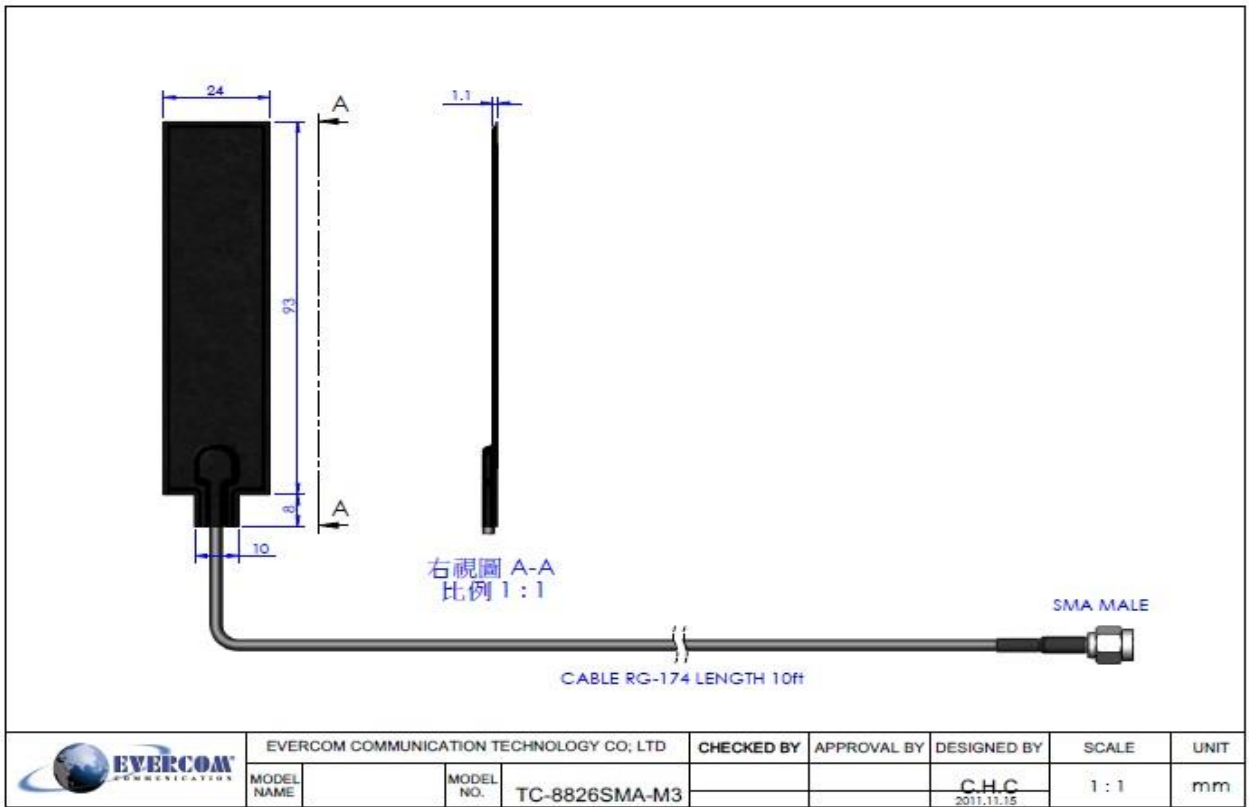
Temperature:-20°C to +60°C

Dimension:  $\phi$ 101 x 24mm

EVERCOM COMMUNICAITON TECHNOLOGY CO., LTD.

No.108 Jiesin St. Taoyuan District Taoyuan City 33063, Taiwan R.O.C.

Tel: +886-3- 376- 5678 Fax: +886-3- 376- 5319 E-Mail: [service@evercomtech.com](mailto:service@evercomtech.com)

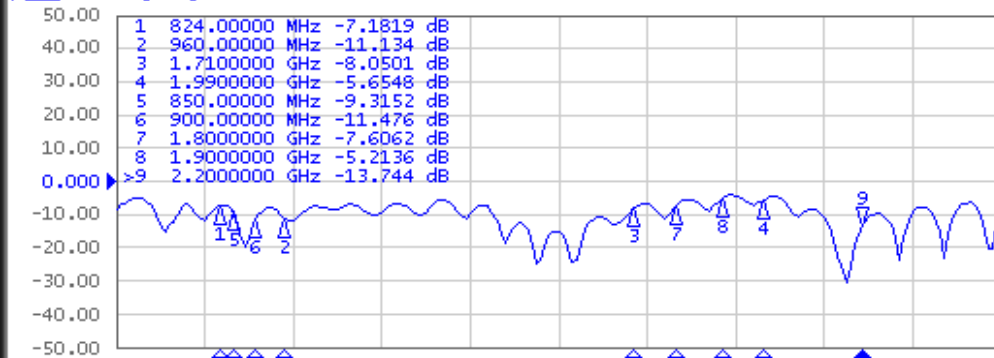


Evercom Communication Technology Co., Ltd. Frequency Inspection Report

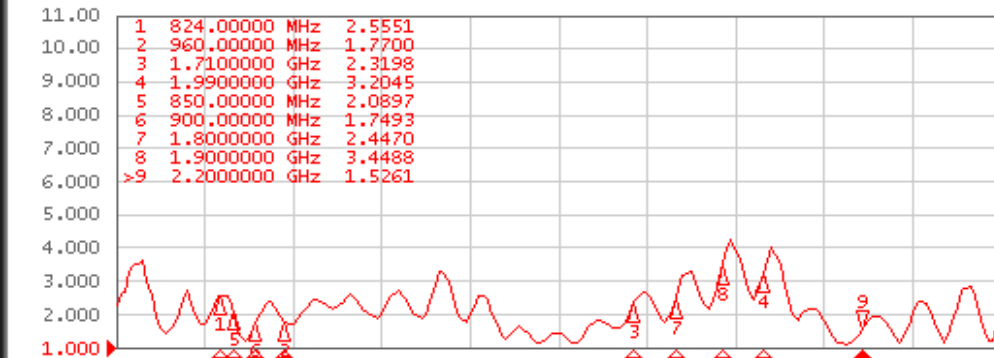
1 Active Ch/Trace 2 Response 3 Stimulus 4 Mkr/Analysis 5 Instr State

Evercom Communication Technology Co.,Ltd.

Tr1 S11 Log Mag 10.00dB/ Ref 0.000dB [R0]



Tr2 S11 SWR 1.000/ Ref 1.000 [R0]



1 Start 600 MHz IFBW 70 kHz Stop 2.5 GHz Cor I

Meas Stop ExtRef Ready Svc 2011-07-25 10:19

Item No. : FC-TC-8826SMA-M3

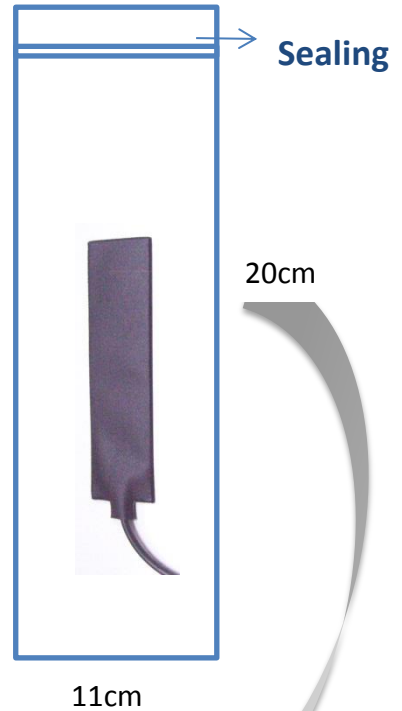
Inspector: Amber



*The World Wide Leader in Antenna*

# Packaging

**\*1 pc Antenna  
PE bag/ each**



**100 pcs per carton  
Carton Dimensions:40\*30\*20cm**

